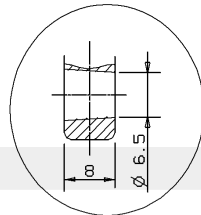
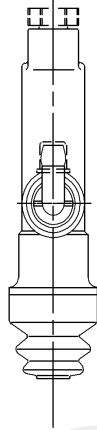


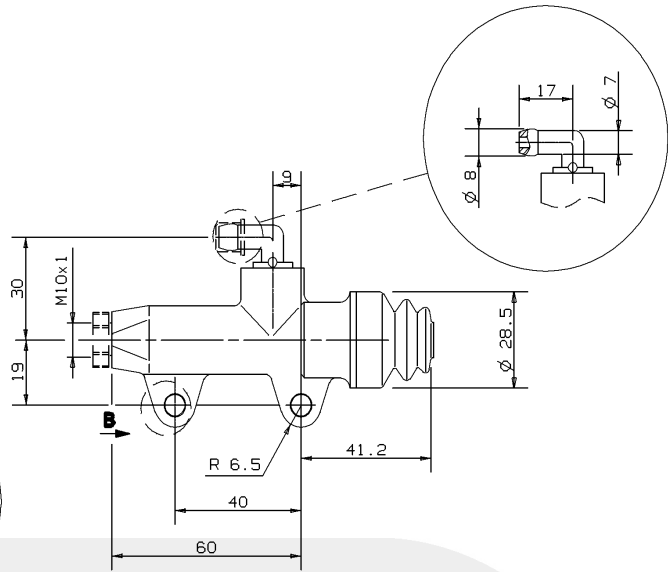


REAR MASTER CYLINDER

PS 11 C
10.4776.50 B



Cutaway view
 of clamp detail
 from B view.



DESCRIPTION

Rear master cylinder without push rod.
 Construction Material: Aluminium Alloy.
 Operating fluid: brake fluid DOT4.
 Pipe fitting can be oriented
 in the desired position.

Master cylinder
 BODY color: Black Anodic
 Oxidation.

TECHNICAL CHARACTERISTICS

Piston diameter: 11.0 mm
 Piston and push rod clearance
 with assembled master cylinder: 1.0 mm
 Weight: 0.088 Kg

AVAILABLE SPARE PARTS

SPARE PARTS CODE	PIPE FITTING	BOOT
10.4776.50	210.3127.20	210.3741.20

Indicating informations subject to modification.
 For further specifications contact Technical Section.

LAST UPDATE: 18/02/1993