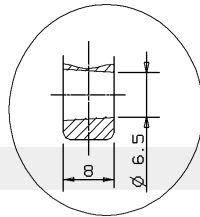
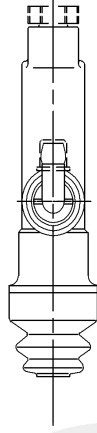


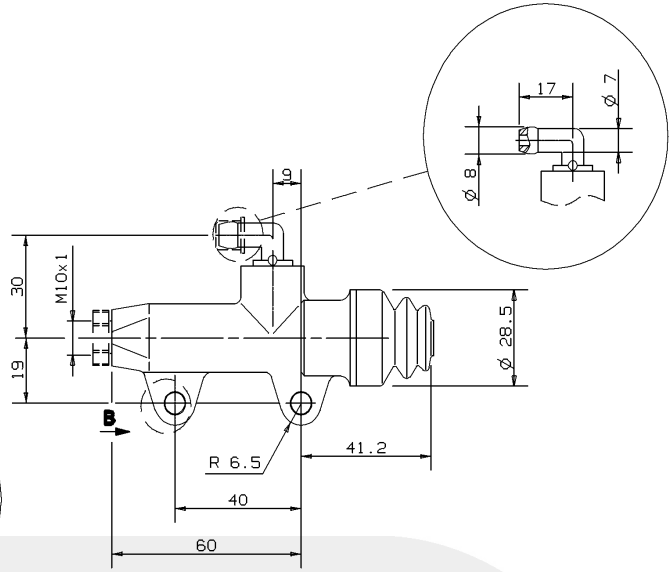


REAR MASTER CYLINDER

PS 11 C
10.4776.51



Cutaway view of clamp detail from B view.



DESCRIPTION

Rear master cylinder without push rod.
 Construction Material: Aluminium Alloy.
 Operating fluid: brake fluid DOT4.
 Pipe fitting can be oriented in the desired position.

Master cylinder BODY color: Gold Anodic Oxidation.

TECHNICAL CHARACTERISTICS

Piston diameter: 11.0 mm
 Piston and push rod clearance with assembled master cylinder: 1.0 mm
 Weight: 0.088 Kg

AVAILABLE SPARE PARTS

| SPARE PARTS CODE | PIPE FITTING | BOOT |
|------------------|--------------|-------------|
| 10.4776.51 | 210.3127.20 | 210.3741.20 |

Indicating informations subject to modification.
 For further specifications contact Technical Section.

LAST UPDATE: 20/06/1990