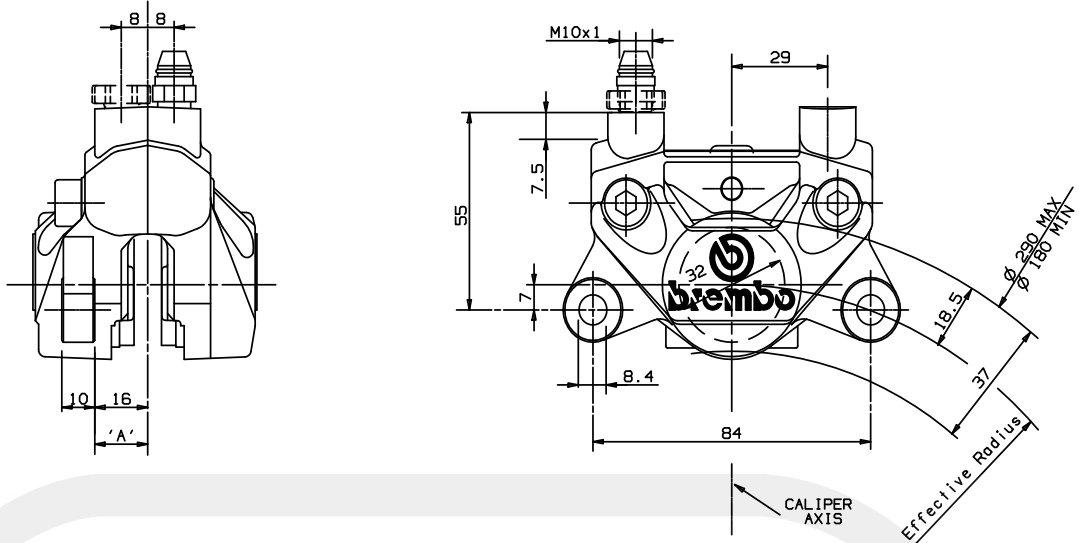


	<h1>FIXED CALIPER</h1>	P 32 F
		20.5161.71 81

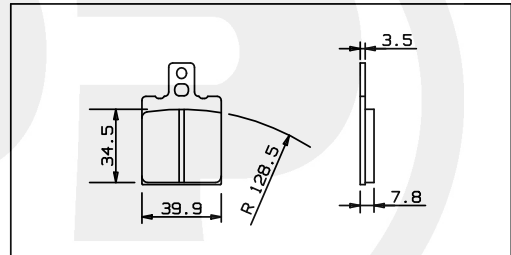


DESCRIPTION

Fixed caliper with 2 opposed pistons, realized by semicalipers joined by bolts. Pads are supported by one pin. Construction Material: Aluminium Alloy. Operating fluid: brake fluid DOT4.

N.B.: drawing shows caliper Code 20.5161.71
Caliper Code 20.5161.81 specular.

PADS SHAPE AND DIMENSIONS



TECHNICAL CHARACTERISTICS

Pistons number and diameter:	2	32mm	Average pad surface (1 pad):	13.3 cm ²
MAX working pressure:		100bar	Weight (with not sintered pad):	0.540 Kg
A) Disc position (TOLERANCE):				
Disc thickness 5.0 mm		±0.1 mm		
Disc thickness 4.6/4.0 mm		±0.3 mm		

CONFIGURATION

CODE CALIPER / CHARACT.	PADS FRICTION MATERIAL	BODY COLOR	MOUNT. SIDE	USABLE DISCS THICKNESS	BRAKE FLUID FOR PADS WEAR
20.5161.71 81	FRENDO 222	BLACK	SX DX	5.0 mm 4.6 mm 4.0 mm	6.60 cm ³

AVAILABLE SPARE PARTS

CODE CALIPER / SPARE PARTS	PADS	BLEEDER SCREW	DUST COVER	PIN
20.5161.71 81	107.2686.41	105.3246.11	105.1502.10	120.2800.11

Indicating informations subject to modification.
For further specifications contact Technical Section.

LAST UPDATE: 09/09/1994