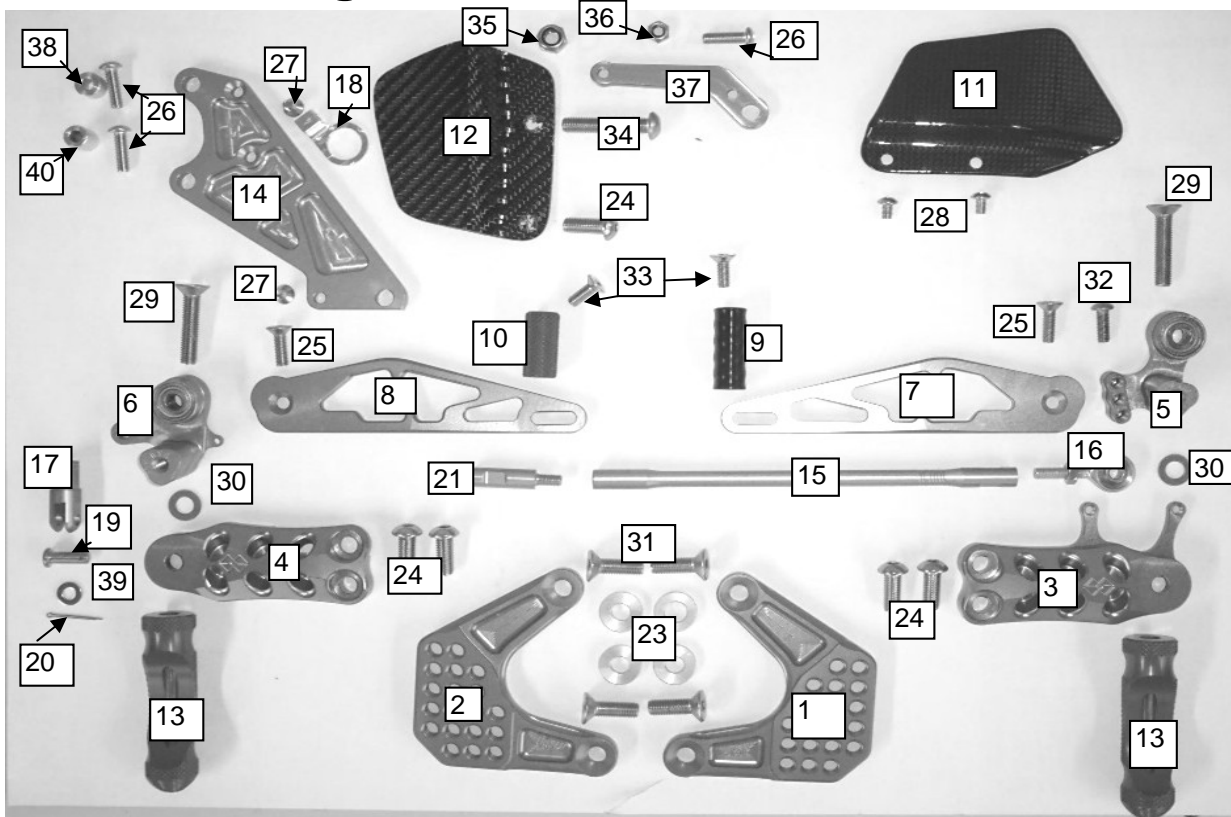


Gilles Tooling

K 08



Pos.	Description	Part-No.	Qty.
1	left basic plate	K08GL-*	1
2	right basic plate	K08GR-*	1
3	left adjusting plate	UV01L-*	1
4	right adjusting plate	UV01R-*	1
5	gear lever bearing	UL01L-*	1
6	brake lever bearing	UL01R-*	1
7	gear lever	US02-*	1
8	brake lever	UB02-*	1
9	gear lever toe piece	UTR02	1
10	brake lever toe piece	UTR01	1
11	left heel protector	CAR 01L	1
12	right heel protector	CAR01R 8-49	1
13	footrest	UF01-*	2
14	holder brake cylinder	UHB11-*	1
15	gear shaft	USW07-*	1
16	ball and socket bearing	GAKFR6	1
17	brake cylinder adapter	UAD 02-30	1
18	holder for stopp light	BLS 04	1
19	adapter pin	BO 01	1
20	split pin	Spl 1,6	1
21	gear shaft	USW-AD01-*	1

Pos.	Description	Part-No.	Qty.
22			
23	collar	DS20-8-4	4
24	screw	M8x20ISO7380	5
25	screw	M6x20DIN7991	2
26	screw	M6x20ISO7380	3
27	screw	M5x10DIN7991	2
28	screw	M5x8ISO7380	2
29	screw	M8x40DIN7991	2
30	washer	ULS8,4DIN125	2
31	screw	M8x25DIN7991	4
32	screw	M6x16ISO7380	1
33	screw	M6x16DIN7991	2
34	screw	M8x40ISO7380	1
35	nut	M8-985-VA	1
36	nut	M6-985-VA	1
37	holder	HA12-B	1
38	collar	DS12-6-9	1
39	washer	ULS 6,4	1
40	collar	DS12-6-14	1
41			
42			

-* = colour; G= gold / t= titanium / B= black