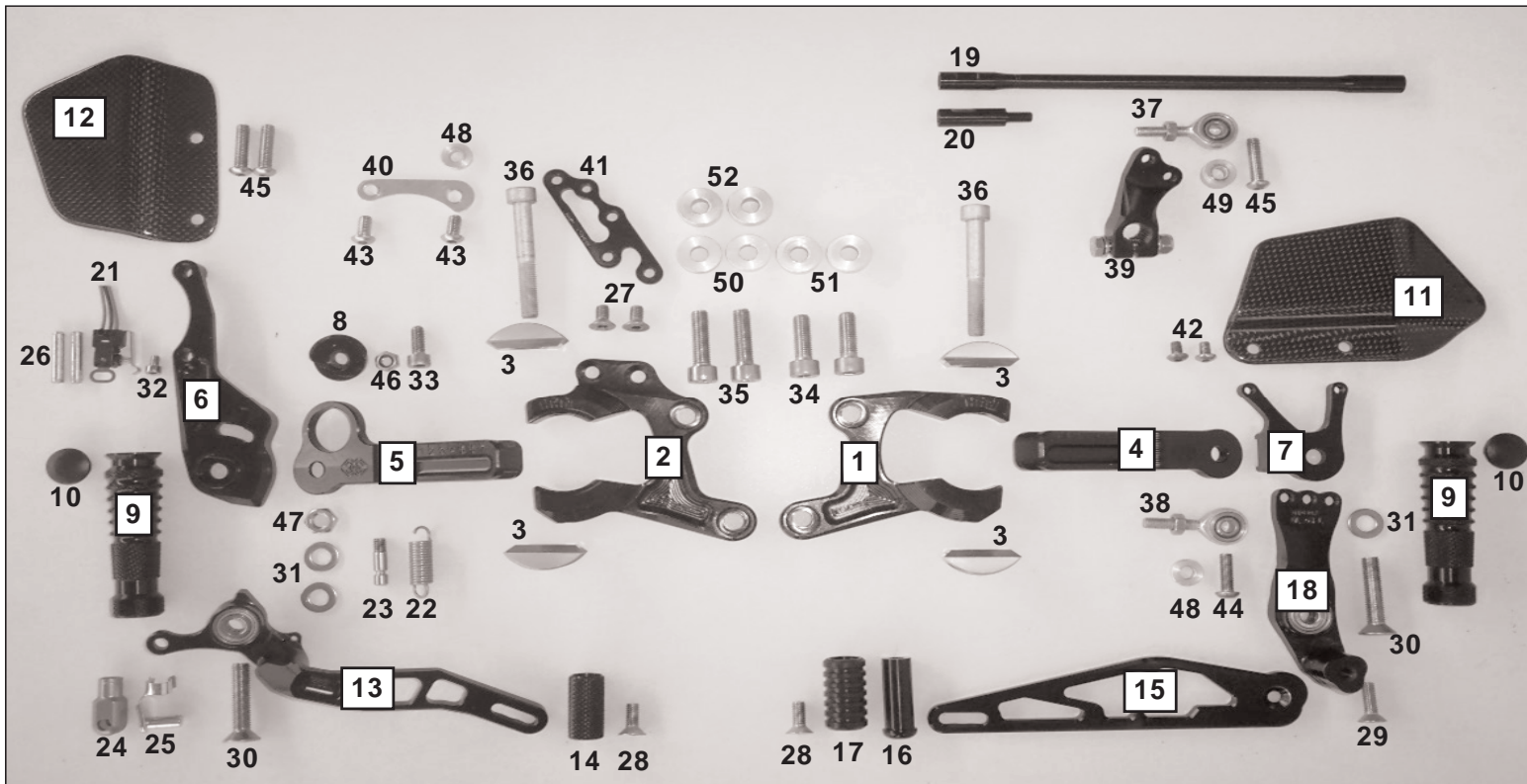
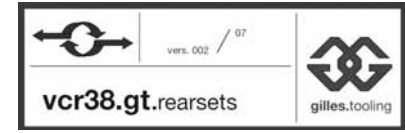


VCR-H02  
teilleiste / partlist



VCR-H02  
teilleiste / partlist



Pos.	Description	Part-No.	Qty.
1	left rotor plate	VCR-GL-H01-*	1
2	right rotor plate	VCR-GR-H01-*	1
3	rotor	VCR-RT-01-*	4
4	left slider	VCR-SL-01-*	1
5	right slider	VCR-SR-01-*	1
6	holder brake unit	VCR-BU-02-*	1
7	holder shift unit	VCR-SU-01-*	1
8	excenter	VCR-EX-01-*	1
9	footrest	UF-04-*	2
10	plug	7 702 856	2
11	left heel protector	CAR01-L	1
12	right heel protector	CAR01-R 6,5-4,5	1
13	brake lever	UB-10-*	1

Pos.	Description	Part-No.	Qty.
14	brake lever toe piece	UTR01-*	1
15	gear lever	US02-*	1
16	gear lever toe piece	UTR06IT-*	1
17	gear lever roller	UTR05	1
18	gear lever adapter	UL03L-*	1
19	gear shaft	USW02-*	1
20	gear shaft adapter	USWAD01-*	1
21	stopp light switch	01022.4501-01	1
22	spring brake lever	7 699 626	1
23	spring fixing pin	7 702 868	1
24	brake cylinder adapter	UAD02-23	1
25	adapter pin	FKB6x12	1
26	connector	01-0110058	2

Pos.	Description	Part-No.	Qty.
27	screw	M6x12-7991-VA	2
28	screw	M6x16-7991-VA	2
29	screw	M6x20-7991-VA	1
30	screw	M8x40-7991-VA	2
31	washer	ULS8,4	3
32	screw	M4x6-912-VA	1
33	screw	M6x16-912-VA	1
34	screw	M8x25-912-VA	2
35	screw	M8x30-912-VA	2
36	screw	M8x60-912-12.9-*	2
37	ball and socket bearing	GAKFL6	1
38	ball and socket bearing	GAKFR6	1
39	gear arm	SA02-*	1

Pos.	Description	Part-No.	Qty.
40	holder	HA03	1
41	holder	HA04-*	1
42	screw	M5x8-7380-VA	2
43	screw	M6x12-7380-VA	2
44	screw	M6x20-7380-VA	1
45	screw	M6x25-7380-VA	3
46	nut	M6-985-VA	1
47	nut	M8-439-VA	1
48	collar	DS14-6-4	2
49	collar	DS15-6-6	1
50	collar	DS20-8-6	2
51	collar	DS20-8-8	2
52	collar	DS20-8-10	2