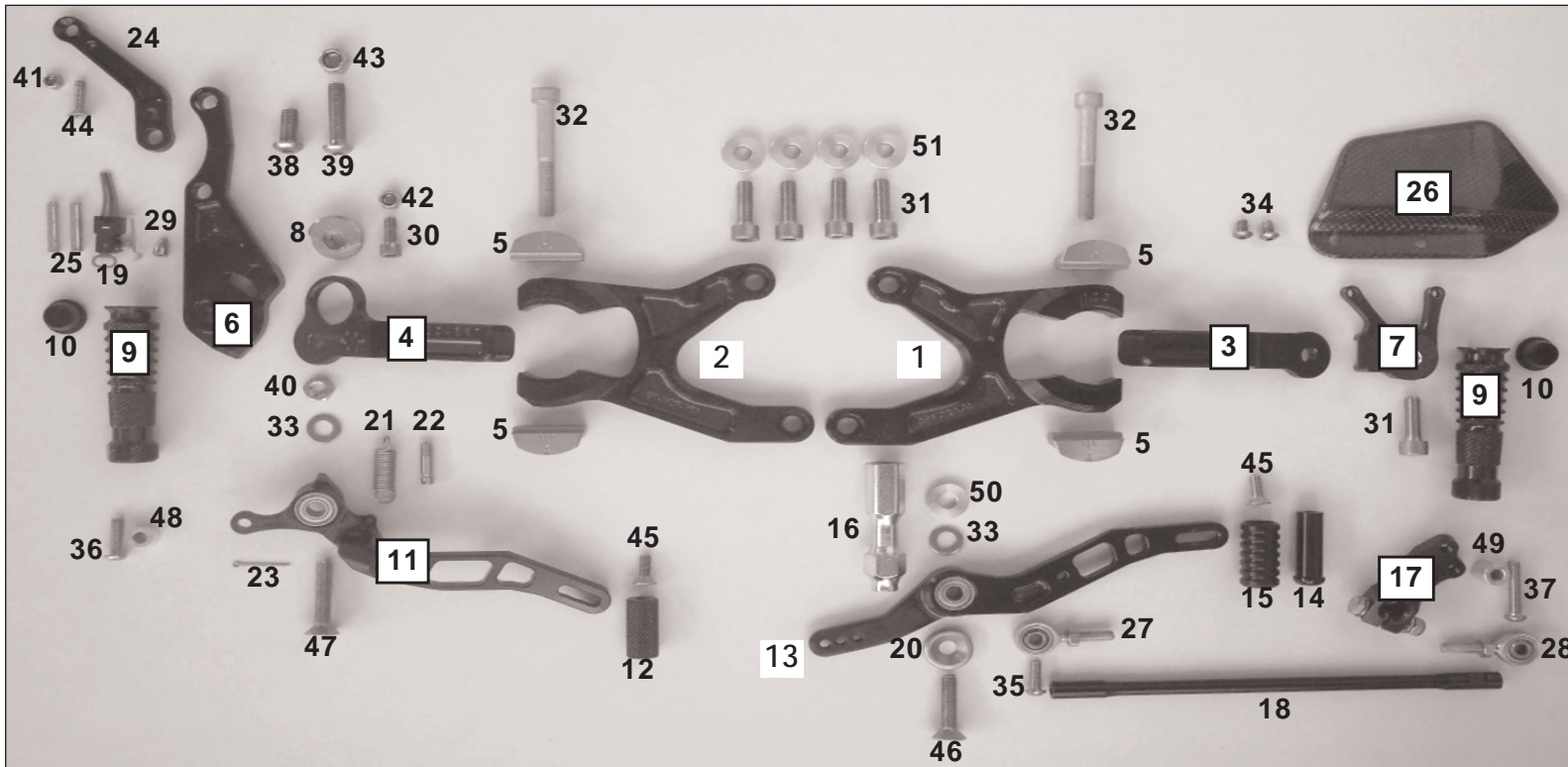


vcr-Y01
teileliste / partlist



vcr-Y01
teileliste / partlist



Pos.	Description	Part-No.	Qty.
1	left rotor plate	VCR-GL-Y01*	1
2	right rotor plate	VCR-GR-Y01*	1
3	left slider	VCR-SL-01-*	1
4	right slider	VCR-SR-01-*	1
5	rotor	VCR-RT-01-*	4
6	holder brake unit	VCR-BU-01-*	1
7	holder shift unit	VCR-SU-01-*	1
8	excenter	VCR-EX-01-*	1
9	footrest	UF-04-*	2
10	plug	7 702 856	2
11	brake lever	UB-10-*	1
12	brake lever toe piece	UTR01-*	1

* = colour; G= gold / t= titanium / B= black

Pos.	Description	Part-No.	Qty.
13	gear lever	US-08-*	1
14	gear lever toe piece	UTR06IT-*	1
15	gear lever roller	UTR05	1
16	gear lever adapter	SPS-07	1
17	gear arm	SA03-*	1
18	gear shaft	USW02-*	1
19	stopp light switch	01022.4501-01	1
20	bind	BL01-*	1
21	spring brake lever	7 699 626	1
22	spring fixing pin	7 702 868	1
23	splint	SPL1,6	1
24	holder	HA12-B	1
25	connector	01-0110058	2

Pos.	Description	Part-No.	Qty.
26	left heel protector	CAR01-L	1
27	ball and socket bearing	GAKFL6	1
28	ball and socket bearing	GAKFR6	1
29	screw	M4x6-912-VA	1
30	screw	M6x16-912-VA	1
31	screw	M8x25-912-VA	5
32	screw	M8x60-912-12.9	2
33	washer	ULS8,4-VA	2
34	screw	M5x8-7380-VA	2
35	screw	M6x16-7380-VA	1
36	screw	M6x20-7380-VA	1
37	screw	M6x30-7380-VA	1
38	screw	M8x20-7380-VA	1

Pos.	Description	Part-No.	Qty.
39	screw	M8x35-7380-VA	1
40	nut	M8-439-VA	1
41	nut	M5-985-VA	1
42	nut	M6-985-VA	1
43	nut	M8-985-VA	1
44	screw	M5x20-7991-VA	1
45	screw	M6x16-7991-VA	2
46	screw	M8x35-7991-VA	1
47	screw	M8x40-7991-VA	1
48	collar	DS12-6-9	1
49	collar	DS11-6-14	1
50	collar	DS20-8-4	1
51	collar	DS20-8-6	4