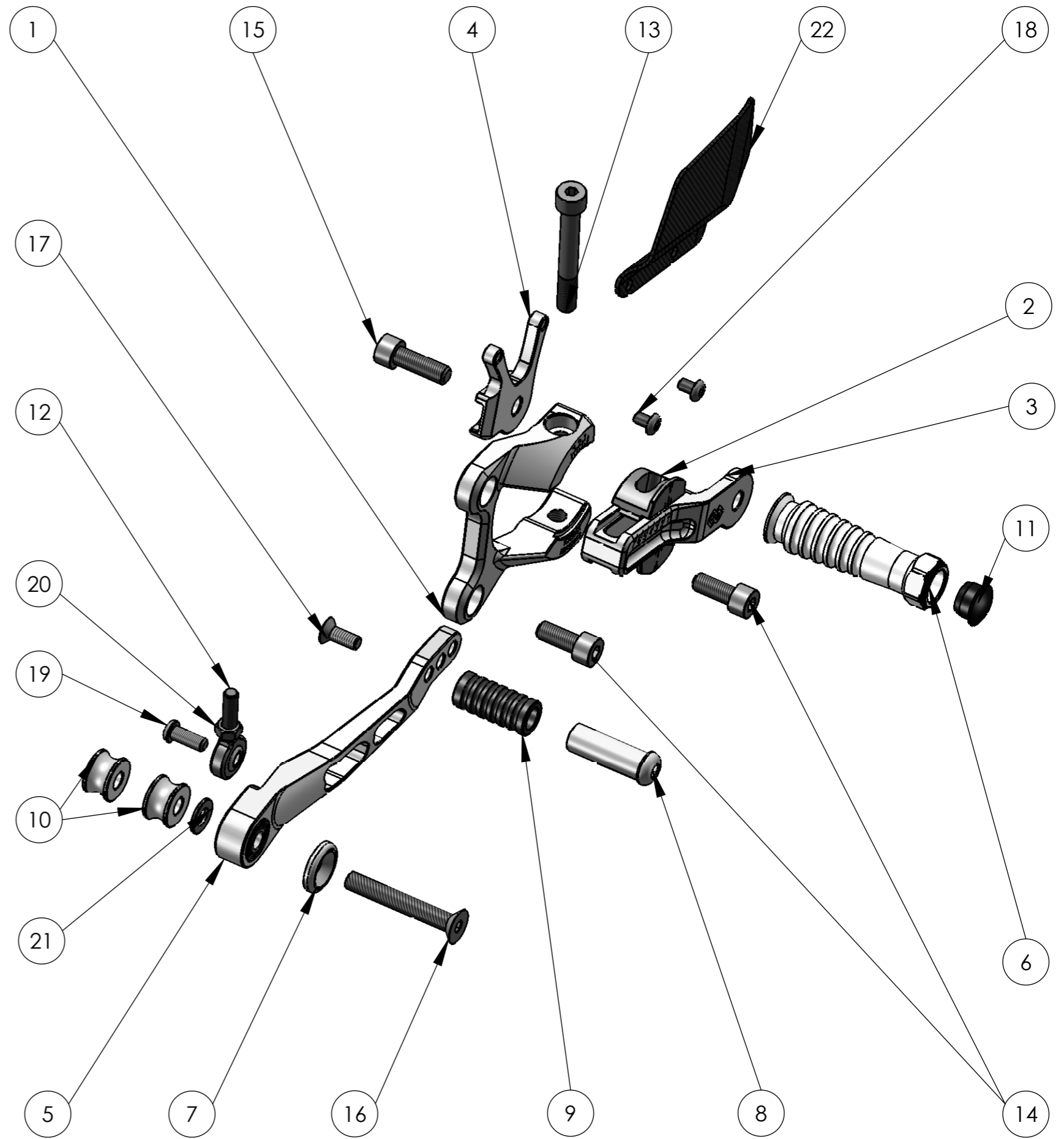


vcr38gt-H05
Teilleiste/partlist

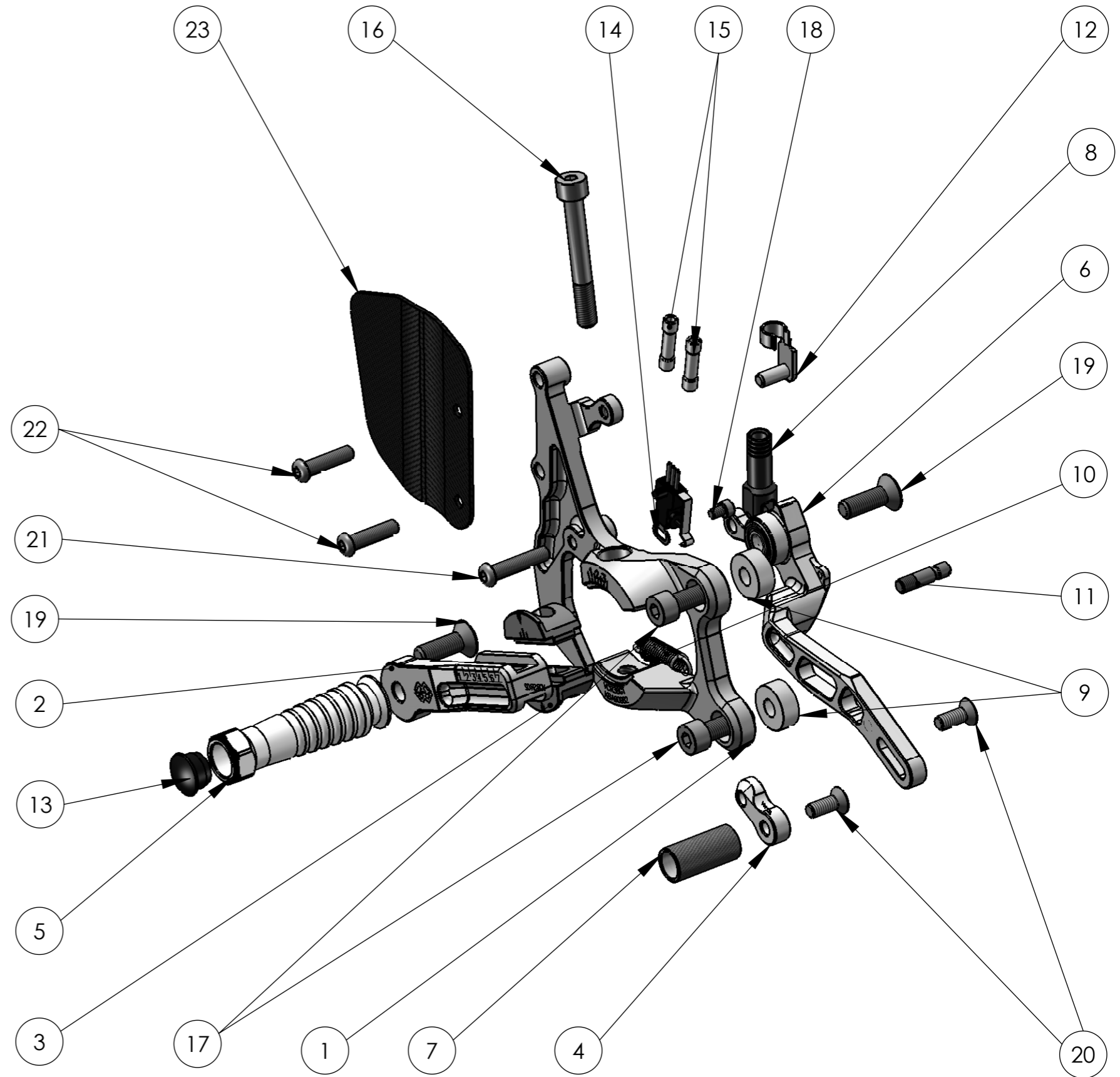
POS	Part-No.	Description	Qty
1	VCR-GL-H05-*	left rotor plate	1
2	VCR-RT01-*	rotor (2 parts)	1
3	VCR-SL-01-*	left slider	1
4	VCR-SU-01-*	holder shift unit	1
5	US-20-*	gear lever	1
6	UF-04-*	footrest	1
7	BL01-*	blind	1
8	UTR06IT-*	gear lever toe piece	1
9	UTR05	gear lever roller	1
10	DS-20-8-12	collar	2
11	7 702 856	plug	1
12	GAKFR6	ball and socket bearing	1
13	M8x60-912-12.9	screw	1
14	M8x20-912-VA	screw	2
15	M8x25-912-VA	screw	1
16	M8x55-7991-VA	screw	1
17	M6x16-7991-VA	screw	1
18	M5x8-7380-VA	screw	2
19	M6x16-7380-VA	screw	1
20	M6-934-VA	nut	1
21	ULS8.4	washer	1
22	CAR01-L	left heel protector	1

-*color; G=Gold/B=Black



vcr38gt-H05
Teilleiste/partlist

POS	Part-No.	Description	QTy.
1	VCR-GR-H05-*	right rotor plate	1
2	VCR-SR-02-*	right slider	1
3	VCR-RT01-*	rotor (2 parts)	1
4	HA-02-*	holder	1
5	UF-04-*	footrest	1
6	UB-10-*	brake lever	1
7	UTR01-*	brake lever toe piece	1
8	UAD02-40	brake cylinder adapter	1
9	DS 20-8-8	collar	2
10	7 699 626	spring brake lever	1
11	7 702 868	spring fixing pin	1
12	FKB6x12	adapter pin	1
13	7 702 856	plug	1
14	01022.4501-01	stop light switch	1
15	01-0110058	connector	2
16	M8x60-912-12.9	screw	1
17	M8x25-912-VA	screw	2
18	M4x6-912-VA	screw	1
19	M8x25-7991-VA	screw	2
20	M6x16-7991-VA	screw	2
21	M6x30 -7380-VA	screw	1
22	M6x25-7380-VA	screw	2
23	CAR01-R 6-45	right heel protector	1



-*color; G=Gold/B=Black