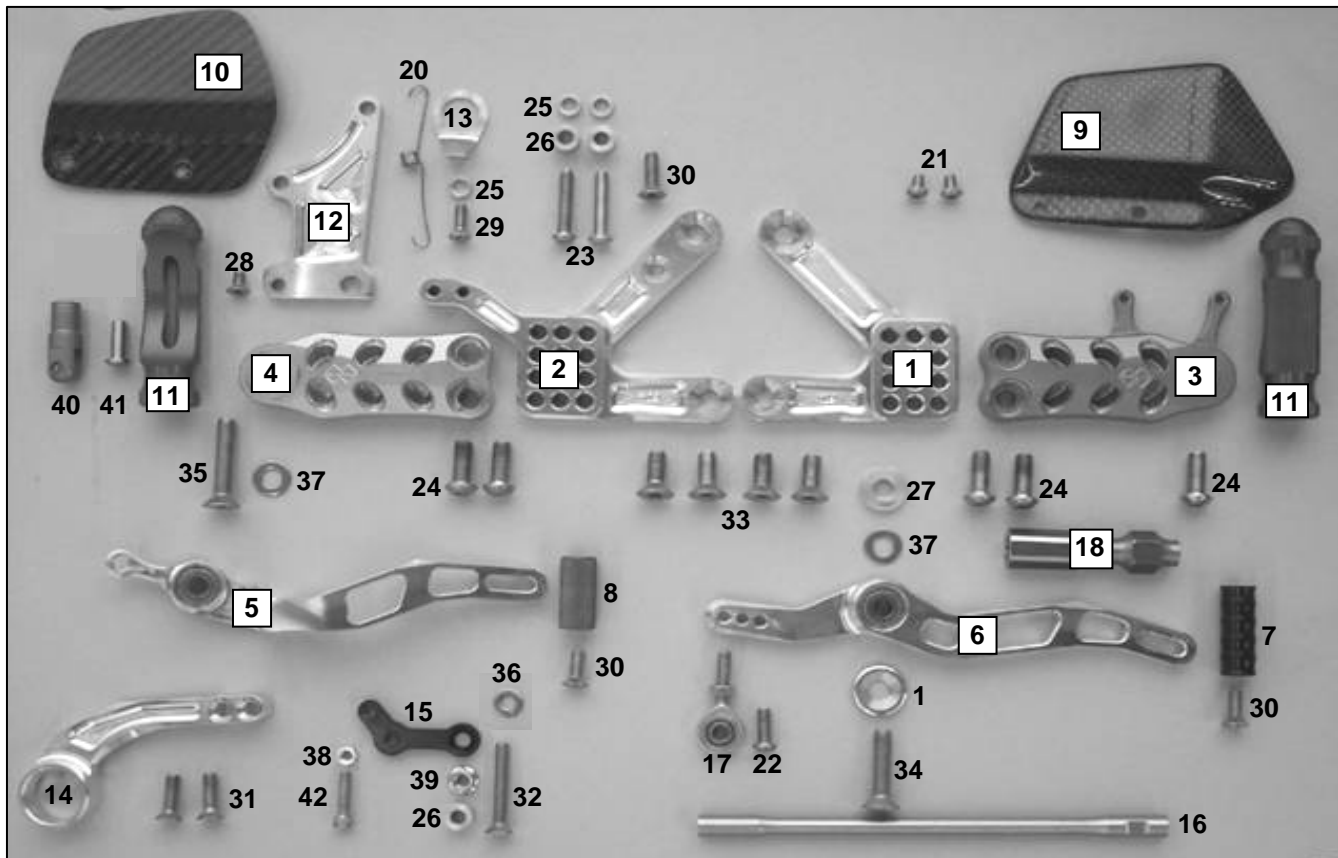


Partlist Yamaha Y09



GILLES TOOLING



Pos.	Description	Part-No.	Qty.
1	left basic plate	Y09GL-*	1
2	right basic plate	Y09GR-*	1
3	left adjusting plate	UV01L-*	1
4	right adjusting plate	UV01R-*	1
5	brake lever	UB08-*	1
6	gear lever	US08-*	1
7	gear lever toe piece	UTR02-*	1
8	brake lever toe piece	UTR01-*	1
9	left heel protector	CAR 01L	1
10	right heel protector	CAR 01R	1
11	footrest	UF01-*	2
12	holder brake cylinder	UHB23-*	1
13	holder for stopp light	BLS01	1
14	holder exhaust	UAH04	1
15	holder	HA05	1
16	gear shaft	USW07-*	1
17	ball and socket bearing	GAKFL6	1
18	adapter gear lever	SPS05	1
19	bind	BL01-*	1
20	spring	FE 70	1
21	screw	M5x8 ISO7380	2
22	screw	M6x16 ISO7380	1
23	screw	M6x30 ISO7380	2

Pos.	Description	Part-No.	Qty.
24	screw	M8x20 ISO7380	5
25	collar	DS10-6-3	3
26	collar	DS12-6-9	3
27	collar	DS20-8-4	1
28	screw	M5x10 DIN7991	1
29	screw	M5x16 DIN7991	1
30	screw	M6x16 DIN7991	3
31	screw	M6x20 DIN7991	2
32	screw	M6x40 DIN7991	1
33	screw	M8x20 DIN7991	4
34	screw	M8x35 DIN7991	1
35	screw	M8x40 DIN7991	1
36	washer	ULS6,4	1
37	washer	ULS8,4	2
38	nut	M5-985	1
39	nut	M6-985	1
40	brakecylinder adapter	UAD02-30	1
41	adapter pin	FKB6x12	1
42	screw	M5x25 DIN912	1
	without screw	M6x35 ISO 7380	1
	without collar	DS-15-6-16	1
	without washer	ULS5,3	1

* = colour; G= gold / t= titanium / B= black