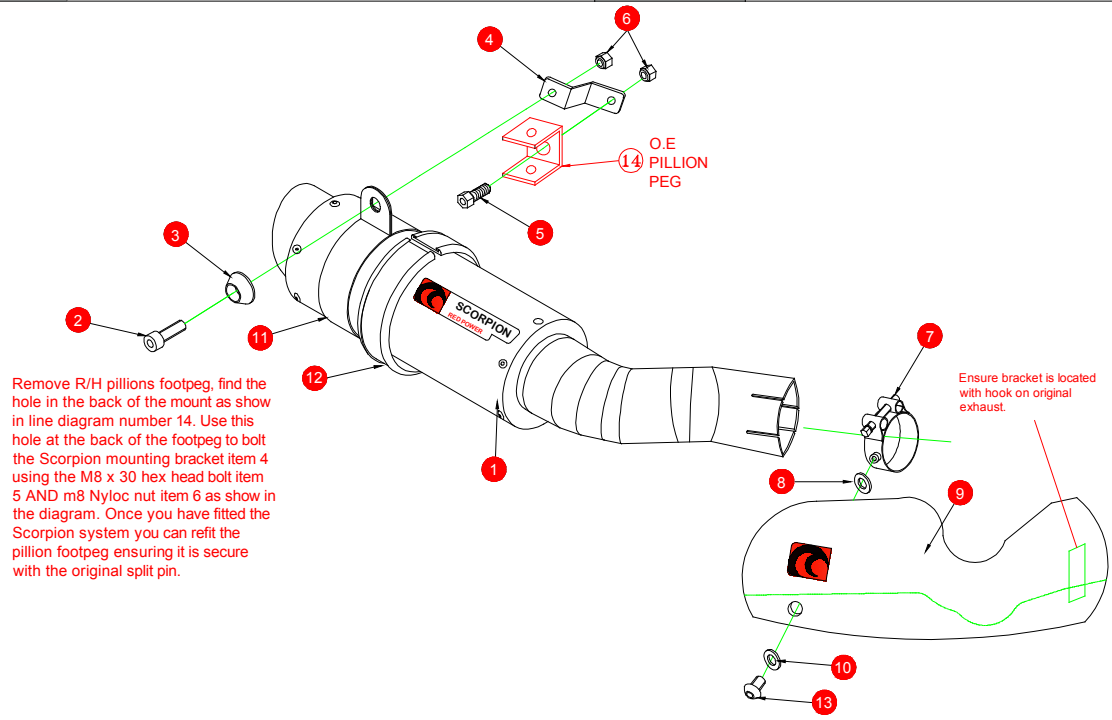


Box: PLOCK 1

BIKE	BMW S1000 RR	PART NO.	BM1000
YEAR	2010 - ONWARDS	FIT KITS	Z039.20422
NOTES	Retain for future reference	FEATURES	N/A



1 225mm RP-1 GP Silencer SC160 with intergrated CP645	8 M6 Fibre Washer (Z017.10748)
2 M8x25 Cap Head Bolt (Z017.10073)	9 Carbon Panel (Z028.20123)
3 Alloy Bolt Finisher (Z026.20068)	10 M6x12 Washer (Z017.10617)
4 Mounting Bracket (Z015.30938)	11 M6x8mm Botton Head (Z017.10001)
5 M8x30 Hex Head Bolt (Z017.10049)	12 Square Edge Rubber (Z029.10024)
6 2 off M8 Nyloc Nuts (Z017.10062)	13 Titanium Silencer Strap (Z028.10013)
7 Band Clamp WITH boss (Z028.20122)	14 R/H Original Pillion Footrest

E-MARK	SC-26 e4 2168
ISSUE NO.	2
DATE	10/10/11
AUTHORISED	T.ROWLEY
CHECKED	

NOTE: ENSURE SCORPION SYSTEM IS CLEAR OF MOVING PARTS AND ALL ORIGINAL FUNCTIONS WORK CORRECTLY.



A) Remove original exhaust from bike, taking care to keep all original components in a safe place.

B) Refit Scorpion exhaust as per line diagram above.

C) When fitted take bike for a short ride to ensure all functions are correct.

D) When bike & exhaust are cool enough check all nuts and bolts are still secure.

