

# Öhlins Motorcycle Recommendation List

## Off-Road and Road&Track 2009





## The Choice is Simple

**C**hoosing an Öhlins shock absorber is simple... since we have made the choice for you!

Based on your bike's performance, its price and space available we have designed a shock that we think suits it, both when it comes to price and performance.

We start by choosing a type which we tailor-make for your specific bike. The basic setup, both the design of the shim stacks and the calibration of the adjusters, is tested both on road and track. They are the results of true tests with your bike and no guesswork!

Öhlins manufactures more than 300 different shock absorber models, each model is tailor-made for one specific bike. The concept of all Öhlins products is not a secret, it is precision. Precision provides superior control of the damping force and the key to our success.

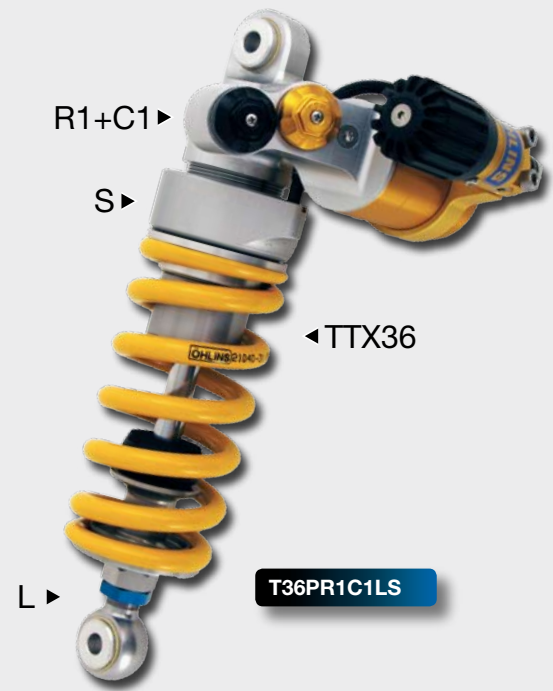
# Shock Absorber - Types and Adjustments



Start by finding out which shock absorber that fits your bike.

With the help of the Öhlins type system you can then identify which type of shock absorber it is and also see what kind of adjustment features it has.

\* The CSC (Chassis Stability Control) function enables the rider to set up the bike for different track conditions. The chassis is tuned with the low speed movements which are controlled via the CSC valve. This feature is only available on TTX44 shocks.



## Shock Absorber Type

- Fluid
- Gas pressure
- Damping Piston
- Floating piston

**S, T**  
Single or twin tube design.

**36, 44, 46 and 50**  
Piston diameter in millimetres.



**E**  
Emulsion type of shock absorber.



**D**  
Monotube high pressure gas type of shock absorber with internal reservoir in the main body.



**P**  
Monotube high pressure gas type of shock absorber with external "piggy back" reservoir.



**H**  
Monotube high pressure gas type of shock absorber with hose mounted external reservoir.

**K**  
Emulsion type of shock absorber for cruiser bikes.



**Q1**  
Progressive damping shock absorber with two pistons.

**W**  
Shock absorber delivered without spring.

## Adjustment Features



**C1**  
Adjustable compression damping. Adjuster wheel or slot on the reservoir.



**C2**  
Adjustable high- and low- speed compression damping. Hexagon and slot on the reservoir.



**C3**  
Electronically Controlled (EC) compression damping. Control panel/display is mounted on the upper triple clamp.



**R1**  
Adjustable rebound damping on single tube hocks. Adjuster wheel above the end eye.



**R1**  
Adjustable rebound damping on TTX shocks.



**S**  
Hose mounted hydraulic spring preload adjuster.



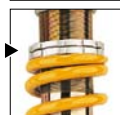
**B**  
Integrated hydraulic spring preload adjuster. Adjuster wheel or hexagon on the adjuster.



**L**  
Adjustable length.



**CSC**  
Chassis Stability Control.



Mechanical spring preload adjuster.

# OFF-ROAD

SHOCK ABSORBERS  
FRONT FORKS  
CARTRIDGE KITS  
STEERING DAMPERS  
FLUIDS  
GREASE  
AND MORE...





# Off-Road Shock Absorbers 2009

Type S36	S36D S36E	S36DW	Type S36H	S36H	S36HR1C1	Type S36P	S36P	S36PW	S36PC1	S36PR1C1	S36PR1C1L	S36PR1C2 S36PR1C2Q1

Type S46H	S46HR1C1	S46HR1C2	Type S46P	S46PR1C1	S46PR1C2 S46PR1C2Q1	S46PR1C3	Type S50P	S50PR1C2Q1	Type T44P	T44PR1C1 <small>NEW</small>

*Note! Your shock absorber could look different from the one pictured. The reservoir may be angled to fit your bike and a horizontal reservoir is used on some models.*

Photo: mx-foto.se

Brand Model, type	Year	Shock absorber		P/C	Length	Stroke	Fork spring kit		P/C
		Part No.	Type				Spring	Part No.	
<b>Gas Gas</b>									
250/300 Enduro	2005-08	GG 888	S46PR1C2	18	424	115	00596-11		
450 Enduro	2006-07	GG 888	S46PR1C2	18	424	115	00596-11		
<b>Honda</b>									
CR 85	2003	HO 390	S46PR1C1	16	403,5	105	00698-09		
CR 85	2004-08	HO 590	S46PR1C2W	16	405	100	00698-07 <sup>1)</sup>		
CR 125	2005-07	HO 691	S46PR1C2W	16	498	133	00596-08 <sup>1)</sup>		
CR 250	2006-07	HO 792	S46PR1C2W	16	498	133	06310-09 <sup>1)</sup>	08641-38/ -40/ -42/ -44/ -46/ -48	300
CRF 150	2007-08	HO 795	S46PR1C2W	16	426	107	00698-09 <sup>1)</sup>		
CRF 250	2009	HO 993	T44PR1C1W	22					
CRF 450	2009	HO 994	T44PR1C1W	22					
XR 50/CRF 50, Light	2003-05	HO 380	S36DW	2	240	58	00281-10 <sup>1)</sup>		
XR 50/CRF 50, Heavy	2003-05	HO 381	S36DW	2	245	58	00281-13 <sup>1)</sup>		
XR 50/CRF 50, Heavy	2003-05	HO 382	S36PC1W	10	245	58	00281-13 <sup>1)</sup>		
XR 70/ CRF 70	2003-05	HO 487	S36DW	2	275	72	00180-45 <sup>1)</sup>		
<b>Kawasaki</b>									
KLX 110	2002-05	KA 488	S36DW	2	255	60	00180-57 <sup>1)</sup>		
KX 65	2002-07	KA 797	S36PR1C1	12	347	91	00180-93		
KX 85	2001-08	KA 590	S46PR1C2W	16	380	111	00698-07		
KX 125	2005-07	KA 791	S46PR1C2W	16	470	138	06310-08 <sup>1)</sup>	08699-38/ -40/ -42/ -44/ -46	300
KX 250	2004-07	KA 692	S46PR1C2W	16	470	138	00596-10 <sup>1)</sup>	08699-38/ -40/ -42/ -44/ -46	300
KX 250F, Enduro	2004	KA 483	S46PR1C2W	16	472	140	00596-09 <sup>1)</sup>	08699-38/ -40/ -42/ -44/ -46	300
KX 250F	2008	KA 893	T44PR1C1W	21	486	138,5	06310-09 <sup>1)</sup>	08641-38/ -40/ -42/ -44/ -46/ -48	300
KX 250F	2009	KA 993	T44PR1C1W	22					
KX 450F	2006	KA 794	S46PR1C2W	16	485,5	138	06310-11 <sup>1)</sup>		
KX 450F	2007	KA 794	S46PR1C2W	16	485,5	138	06310-11 <sup>1)</sup>	08710-38/ -40/ -42/ -44/ -46	300
KX 450F	2008	KA 894	T44PR1C1W	21	486	138,5	06310-10 <sup>1)</sup>	08710-38/ -40/ -42/ -44/ -46	300
KX 450F	2009	KA 994	T44PR1C1W	22					
<b>KTM</b>									
EXC 450F	2009	KT 984	T44PR1C1Q1W	25	413,5	111	06320-19 <sup>1)</sup>	08772-38/ -40/ -42/ -44/ -46/ -48/ -50	
SX 65	2004-08	KT 798	S36PR1C1	12	348	95	00180-93		
SX 85	2006-08	KT 690	S46PR1C2Q1W	22	402	100	00698-03 <sup>1)</sup>		
SX 125	2007	KT 791	S46PR1C2Q1W	22	411,5	110,5	06320-16 <sup>1)</sup>		
SX 250	2007	KT 792	S46PR1C2Q1W	22	411,5	110,5	06320-17 <sup>1)</sup>		
SX 250F	2009	KT 993	T44PR1C1Q1W	25	410,5	109	06320-17 <sup>1)</sup>	08764-38/ -40/ -42/ -44/ -46/ -48/ -50	300
SX 450/525	2005	KT 596	S50PR1C2Q1W	27	404,5	105	06320-26 <sup>1)</sup>		
SX 450F	2008	KT 894	T44PR1C1Q1W	25	410,5	109	06320-19 <sup>1)</sup>	08764-38/ -40/ -42/ -44/ -46/ -48/ -50	300
SX 450F	2009	KT 994	T44PR1C1Q1W	25	410,5	109	06320-19 <sup>1)</sup>	08764-38/ -40/ -42/ -44/ -46/ -48/ -50	300
<b>Suzuki</b>									
DR-Z 400SM	2005	SU 506	S46PR1C2	17	447	124,5	00596-13	08721-10	300
RM 65	2003-07	KA 797	S36PR1C1	12	347	91	00180-93		
RM 85	2005-08	SU 590	S46PR1C2W	16	397	107	00698-07 <sup>1)</sup>		
RM 125	2004-05	SU 591	S46PR1C2W	16	480,5	128,5	00596-09 <sup>1)</sup>	08641-38/ -40/ -42/ -44/ -46/ -48	300
RM 250	2004-05	SU 592	S46PR1C2W	16	480,5	128,5	00596-09 <sup>1)</sup>	08641-38/ -40/ -42/ -44/ -46/ -48	300
RM 250	2006	SU 692	S46PR1C2W	16	479,5	127,5	00596-09 <sup>1)</sup>	08641-38/ -40/ -42/ -44/ -46/ -48	300
RM 250	2007	SU 792	S46PR1C2W	16	479,5	127,5	06310-10 <sup>1)</sup>	08641-38/ -40/ -42/ -44/ -46/ -48	300
RM-Z 110	2002-05	KA 488	S36DW	2	255	60	00180-57 <sup>1)</sup>		
RM-Z 250, Enduro	2004	KA 483	S46PR1C2W	16	472	140	00596-09 <sup>1)</sup>	08699-38/ -40/ -42/ -44/ -46	300
RM-Z 250	2004-06	SU 693	S46PR1C2W	16	472	140	00596-07 <sup>1)</sup>	08699-38/ -40/ -42/ -44/ -46	300
RM-Z 250	2008	SU 893	T44PR1C1W	21	480,5	128,5	06310-10 <sup>1)</sup>	08641-38/ -40/ -42/ -44/ -46/ -48	300
RM-Z 250	2009	SU 993	T44PR1C1W	22					
RM-Z 450	2005	SU 594	S46PR1C2W	16	480,5	128,5	00596-12 <sup>1)</sup>	08641-38/ -40/ -42/ -44/ -46/ -48	300
RM-Z 450	2005	SU 596	S50PR1C2W	24	480,5	131	06310-11 <sup>1)</sup>	08641-38/ -40/ -42/ -44/ -46/ -48	300
RM-Z 450	2006	SU 694	S46PR1C2W	16	480	128	00596-11 <sup>1)</sup>	08641-38/ -40/ -42/ -44/ -46/ -48	300
RM-Z 450	2006	SU 696	S50PR1C2W	24	480,5	131	06310-11 <sup>1)</sup>	08641-38/ -40/ -42/ -44/ -46/ -48	300
RM-Z 450	2007	SU 794	S46PR1C2W	16	480	128	06310-11 <sup>1)</sup>	08641-38/ -40/ -42/ -44/ -46/ -48	300
RM-Z 450	2008	SU 894	T44PR1C1W	21	480,5	128,5	06310-11 <sup>1)</sup>	08641-38/ -40/ -42/ -44/ -46/ -48	300
RM-Z 450	2009	SU 994	T44PR1C1W	22					
<b>Vintage MX</b>									
Universal	All	CC 606*	S36D	13	360	107	00180-90		
Universal	All	CC 607*	S36D	13	340	105	00180-90		
Universal	All	CC 616*	S36P	13	360	107	00180-90		
Universal	All	CC 617*	S36P	13	340	105	00180-90		
Universal	All	CC 706*	S36D	13	360	107	00480-01		
Universal	All	CC 707*	S36D	13	340	105	00480-01		
Universal	All	CC 708*	S36D	13	380,5	107	00480-01		
Universal	All	CC 717*	S36P	13	340	105	00480-01		
Universal	All	CC 718*	S36P	13	380,5	107	00480-01		

<sup>1)</sup> This is a recommended spring, spring is not delivered with the shock absorber.

Note: The last 2 digit in the part no of the front fork springs indicates the spring rate. Example: Part no 8626-40 has spring rate 4.0 N/mm

# MX & Enduro

Brand Model, type	Year	Shock absorber		P/C	Length	Stroke	Fork spring kit		P/C
		Part No.	Type				Spring	Part No.	
<b>Yamaha</b>									
TT-R 50E	2006-07	YA 688	S36DW	2	242	54	00281-10 <sup>1)</sup>		
TT-R 90	2005	YA 587	S36PW	7	274,5	59,5	00281-12 <sup>1)</sup>		
YZ 80	1993-01	YA 590	S46PR1C2W	16	402	104	00698-07 <sup>1)</sup>		
YZ 85	2002-08	YA 590	S46PR1C2W	16	402	104	00698-07 <sup>1)</sup>		
YZ 250	2002-05	YA 792	S46PR1C2W	16	492	132	06310-09 <sup>1)</sup>		
YZ 250	2006-07	YA 792	S46PR1C2W	16	492	132	06310-09 <sup>1)</sup>	08723-38/ -40/ -42/ -44/ -46	300
YZ 250F	2007	YA 793	S46PR1C2W	16	490	130,5	06310-10 <sup>1)</sup>	08723-38/ -40/ -42/ -44/ -46	300
YZ 250F	2009	YA 993	T44PR1C1W	22	491	135	06310-10 <sup>1)</sup>	08763-38/ -40/ -42/ -44/ -46/ -48/ -50/ -52	300
YZ 450F	2005	YA 596	S50PR1C2W	24	492	132	06310-10 <sup>1)</sup>	08710-38/ -40/ -42/ -44/ -46	300
YZ 450F	2007	YA 794	S46PR1C2W	16	491	131,5	06310-11 <sup>1)</sup>	08723-38/ -40/ -42/ -44/ -46	300
YZ 450F	2009	YA 994	T44PR1C1W	22	491	135	06310-11 <sup>1)</sup>	08763-38/ -40/ -42/ -44/ -46/ -48/ -50/ -52	300

<sup>1)</sup> This is a recommended spring, spring is not delivered with the shock absorber.

Note: The last 2 digit in the part no of the front fork springs indicates the spring rate. Example: Part no 8626-40 has spring rate 4.0 N/mm

# MX & Enduro Front Forks

Brand Model, type	Year	Part No	Type	P/C	Length	Stroke	Spring <sup>2)</sup>	
<b>Honda</b>								
CRF 250	2008	FGHO 893	TTX Cartridge Kit	105	941	306	08762-38/ -40/ -42/ -44/ -46/ -48/ -50/ -52	
CRF 250	2009	FGHO 993	TTX Cartridge Kit	106				
CRF 450	2008	FGHO 894	TTX Cartridge Kit	105	941	306	08762-38/ -40/ -42/ -44/ -46/ -48/ -50/ -52	
CRF 450	2009	FGHO 994	TTX Cartridge Kit	106				
<b>Kawasaki</b>								
KX 125/250 Enduro/XC	2005-06	FGSU 681	48EXF	112	940	300	02428-39, -43	
KX 250F Enduro/XC	2006	FGKA 681 <sup>1)</sup>	48EXF	114	940	300	02428-39, -43	
KX 250F	2008	FGKA 893	TTX Cartridge Kit	105	943	300	08762-38/ -40/ -42/ -44/ -46/ -48/ -50/ -52	
KX 250F	2009	FGKA 993	TTX Cartridge Kit	106				
KX 450F	2008	FGKA 894	TTX Cartridge Kit	105	958	301	08763-38/ -40/ -42/ -44/ -46/ -48/ -50/ -52	
KX 450F	2009	FGKA 994	TTX Cartridge Kit	106				
<b>KTM</b>								
SX 250F	2008	FGKT 893	TTX Cartridge Kit	105	943	304	08765-37/ -39/ -41/ -43/ -45/ -47/ -49/ -51	
SX 250F	2009	FGKT 993	TTX Cartridge Kit	106			08765-37/ -39/ -41/ -43/ -45/ -47/ -49/ -51	
SX 450F	2008	FGKT 894	TTX Cartridge Kit	105	943	304	08765-37/ -39/ -41/ -43/ -45/ -47/ -49/ -51	
SX 450F	2009	FGKT 994	TTX Cartridge Kit	106			08765-37/ -39/ -41/ -43/ -45/ -47/ -49/ -51	
<b>Suzuki</b>								
RM-Z 250 Enduro/XC	2005-06	FGSU 681	48EXF	112	940	300	02428-39, -43	
RM-Z 250	2008	FGSU 893	TTX Cartridge Kit	105	941	306	08762-38/ -40/ -42/ -44/ -46/ -48/ -50/ -52	
RM-Z 250	2009	FGSU 993	TTX Cartridge Kit	106				
RM-Z 450	2005	FGSU 591 <sup>1)</sup>	48MXF	116	940	300	02428-41, -45	
RM-Z 450	2008	FGSU 894	TTX Cartridge Kit	105	941	306	08762-38/ -40/ -42/ -44/ -46/ -48/ -50/ -52	
RM-Z 450	2009	FGSU 994	TTX Cartridge Kit	106				
<b>Yamaha</b>								
YZ 250F	2008	FGYA 893	TTX Cartridge Kit	105	946	302	08763-38/ -40/ -42/ -44/ -46/ -48/ -50/ -52	
YZ 250F	2009	FGYA 993	TTX Cartridge Kit	106			08763-38/ -40/ -42/ -44/ -46/ -48/ -50/ -52	
YZ 450F	2008	FGYA 894	TTX Cartridge Kit	105	946	302	08763-38/ -40/ -42/ -44/ -46/ -48/ -50/ -52	
YZ 450F	2009	FGYA 994	TTX Cartridge Kit	106			08763-38/ -40/ -42/ -44/ -46/ -48/ -50/ -52	
<b>Supermotard</b>								
Universal		FG 661	48MXF	115	910	255	02490-47/ -51	

<sup>1)</sup> Includes both upper and lower triple clamps

<sup>2)</sup> Springs for the TTX Cartridge kits has to be ordered separately to suite customer's choice of spring rate



# MX & Enduro Steering Damper Kits

## MX Steering Damper



### Complete Steering Damper Kits with brackets included

Brand/Model	Year	Part No	P/C	Note
<b>Honda</b>				
CRF 250/450	2008	SD 510	47	
<b>Kawasaki</b>				
KX 250/450F	2008	SD 520	47	
<b>KTM</b>				
SX 250/450F	2008	SD 530	47	
<b>Suzuki</b>				
RM-Z 250/450	2008	SD 540	47	
<b>Yamaha</b>				
YZ 250/450F	2008	SD 550	47	

*More applications will continuously be added.*

## ATV Shock Absorbers with PDS Function (Q1)



Photo: H Foley

**Main advantages are:**

- Better traction and comfort since you are able to use softer springs without having bottoming problems.
- The dynamic riding position will be higher, that gives improved function over a series of whoops.
- Eliminates bottoming, saves your back and the chassis on your ATV.
- Tested and used by various teams in the GNC and ITP series.



Brand Model, type	Year	Part No	Type	P/C	Length	Stroke	Spring	A-arms
<b>ATV Racing Kit</b>								
Universal		AT 370*	S36PR1C1W	26	Can be modified			
Universal		AT 371*	S36PR1C1W	26	Can be modified			
Universal		AT 771*	S36PR1C2Q1W	33	Can be modified			
Universal		AT 772*	S36PR1C2Q1W	33	Can be modified			
Universal		AT 773*	S36PR1C2Q1W	33	Can be modified			
Universal		AT 774*	S36PR1C2W	23	Can be modified			
<b>Arctic Cat</b>								
400 DVX, Front	2004-05	SU 471*	S36PR1C2	33	416	108	00180-72, 04060-30	
400 DVX, Front	2004-05	SU 473*	S36PC1	21	416,5	108	00180-72	
<b>Bombardier</b>								
DS 650, Rear	2003	BO 372	S46PR1C2	18	434	115	00596-19	
<b>Honda</b>								
4-Trax 400 EX, Front	1999-01	HO 176*	S36PR1C1	30	410	107	00180-46	
4-Trax 400 EX, Rear	1999-01	HO 174	S46PR1C1	17	394	105	00698-13	
TRX 450, Front	2004-08	HO 671*	S36PR1C2W	30	419	112	06390-04, 04060-40 <sup>2)</sup>	
TRX 450, Front	2004-08	HO 671*	S36PR1C2W	30	419	112	06390-05, 04060-40 <sup>2)</sup>	Standard mount +2"
TRX 450, Front	2004-08	HO 575*	S36PR1C2W	30	505	147	00180-48, 04060-40 <sup>2)</sup>	Long travel, Houser +2"
TRX 450, Front Racing	2004-08	HO 576*	S36PR1C2Q1W	36	505	148	00480-16, 04060-40 <sup>2)</sup>	Long travel, Houser +2"
TRX 450, Rear	2004-05	HO 572	S46PR1C2W	16	377	108	00698-16 <sup>1)</sup>	
TRX 450, Rear	2006-08	HO 672	S46PR1C2W	16	388	113	00698-09 <sup>1)</sup>	
TRX 450, Rear Racing	2006-08	HO 673	S46PR1C2Q1W	22	388	99	00580-14 <sup>1)</sup>	
<b>Kawasaki</b>								
KFX 400, Front	2003-05	SU 471*	S36PR1C2	33	416	108	00180-72, 04060-30	
KFX 400, Front	2003-05	SU 473*	S36PC1	21	416,5	108	00180-72	
KFX 450R, Front	2008-09	KA 870*	S36PR1C2W	30	412	119	06390-05, 04060-40 <sup>2)</sup>	
KFX 450R, Rear	2008-09	KA 872	S46PR1C2W	16	435,5	128	00698-05 <sup>1)</sup>	
KFX 700 V-Force, Front	2003-04	KA 473*	S36PC1	21	410,5	113	00180-71	

\* These shocks are delivered as pairs.

1) Recommended spring, this spring is not delivered with the shock absorber

2) Recommended springs, these springs are not delivered with the shock absorbers, 2 of each is required per set of front shocks

Brand	Model, type	Year	Part No	Type	P/C	Length	Stroke	Spring	A-arms
<b>KTM</b>									
	SX 450/505, Front	2009	KT 971*	S36PR1C2W	30				
	SX 450/505, Rear	2009	KT 972	S46PR1C2Q1W	22				
<b>Polaris</b>									
	Predator, Front	2003-05	PB 471*	S36PR1C2	33	456	133	00180-72, 04060-40	
	Predator, Front	2003-05	PB 575*	S36PR1C1	30	456	134	00180-48	
	Predator, Front	2003-05	PB 477*	S36PC1	21	455,5	126	00180-48	
	Predator, Rear	2004-06	PB 574	S46PR1C2Q1	24	443,5	121,5	00596-12	
<b>RST</b>									
	Supermotard, Front	2005	RS 561*	S36PR1C2L	35	317 +10/-0	58	00281-35	
	Supermotard, Rear	2005	RS 562	S46PR1C2L	19	344 +12/-0	68	01096-59	
<b>Suzuki</b>									
	LTZ 400, Front	2003-05	SU 471*	S36PR1C2	33	416	108	00180-72, 04060-30	
	LTZ 400, Front	2003-05	SU 473*	S36PC1	21	416,5	108	00180-72	
	LT-R 450, Front	2006-08	SU 671*	S36PR1C2W	30	439	131,5	06390-04, 04060-40 <sup>2)</sup>	
	LT-R 450, Front Racing	2006-08	SU 672*	S36PR1C2Q1W	36	439	126,5	06380-04, 04060-40 <sup>2)</sup>	
	LT-R 450, Rear	2006-08	SU 673	S46PR1C2W	16	406	106,5	00698-16 <sup>1)</sup>	
	LT-R 450, Rear Racing	2006-08	SU 674	S46PR1C2Q1W	22	408	105,5	00698-16 <sup>1)</sup>	
<b>VLS</b>									
	Supermotard, Rear	2005	VL 562	S46HR1C2L	22	342 +12/-0	49	01096-26	
<b>Yamaha</b>									
	Grizzly, Front	2003-06	YA 619*	S36PC1	22	370,5	88,5	00281-21	
	Grizzly, Rear	2003-06	YA 618*	S36PC1	22	370,5	88,5	00180-64	
	Grizzly 700, Front	2007	YA 778*	S36PC1	22	344,5	90	00281-04	
	Grizzly 700, Rear	2007	YA 779*	S36PC1	22	395,5	92,5	00281-21	
	Rhino, Front	2006	YA 613*	S36D	13	399,5	115	00180-47	
	Rhino, Front	2006	YA 615*	S36PC1	24	400,5	114,5	00180-47	
	Rhino, Rear	2006	YA 614*	S36D	13	395,5	91	00281-20	
	Rhino, Rear	2006	YA 616*	S36PC1	24	396	91,5	00281-20	
	Rhino FI, Front	2008	YA 613*	S36D	13	399,5	115	00180-47	
	Rhino FI, Front	2008	YA 615*	S36PC1	24	400,5	114,5	00180-47	
	Rhino FI, Rear	2008	YA 614*	S36D	13	395,5	91	00281-20	
	Rhino FI, Rear	2008	YA 616*	S36PC1	24	396	91,5	00281-20	
	YZF 350 Banshee, Front	1987-04	YA 075*	S36PR1C1	30	367	113	00180-46	
	YZF 350 Banshee, Rear	1987-04	YA 476	S46PR1C2	18	345	93,5	00698-19	
	YZF 450, Front	2004-08	YA 671*	S36PR1C2W	30	401,5	115	00480-16, 04060-40 <sup>2)</sup>	
	YZF 450, Front	2004-08	YA 573*	S36PC1W	19	399	111	00480-16 <sup>2)</sup>	
	YZF 450, Front	2004-08	YA 671*	S36PR1C2W	30	401,5	115	00180-72, 04060-40 <sup>2)</sup>	Standard mount +2"
	YZF 450, Front	2004-08	YA 573*	S36PC1W	19	399	111	00180-72 <sup>2)</sup>	Standard mount +2"
	YZF 450, Front	2004-08	YA 574*	S36PR1C2W	30	450	133	00480-16, 04060-40 <sup>2)</sup>	Long travel, Leager +2"
	YZF 450, Front Racing	2004-08	YA 576*	S36PR1C2Q1W	36	449	124	00480-16, 04060-40 <sup>2)</sup>	Long travel, Leager +2"
	YZF 450, Front	2004-08	YA 574*	S36PR1C2W	30	450	133	00180-72, 04060-40 <sup>2)</sup>	Long travel, SRF +2"
	YZF 450, Front Racing	2004-08	YA 576*	S36PR1C2Q1W	36	449	124	00180-72, 04060-40 <sup>2)</sup>	Long travel, SRF +2"
	YZF 450, Front	2004-08	YA 575*	S36PR1C2W	30	462	145	00180-72, 04060-40 <sup>2)</sup>	Long travel, Epic, Houser, Roll design +2"
	YZF 450, Front Racing	2004-08	YA 677*	S36PR1C2Q1W	36	462	145	00180-72, 04060-40 <sup>2)</sup>	Long travel, Epic, Houser, Roll design +2"
	YZF 450, Front	2009	YA 971*	S36PR1C2W	30				
	YZF 450, Rear	2004-05	YA 572	S46PR1C2W	16	464	116,5	00596-09 <sup>1)</sup>	
	YZF 450, Rear Racing	2004-05	YA 579	S46PR1C2Q1W	22	466	116,5	00596-10 <sup>1)</sup>	
	YZF 450, Rear	2006-08	YA 672	S46PR1C2W	16	480	127	00596-06 <sup>1)</sup>	
	YZF 450, Rear Racing	2006-08	YA 675	S46PR1C2Q1W	22	480	127	00596-06 <sup>1)</sup>	
	YZF 450, Rear Racing	2009	YA 975	S46PR1C2Q1W	22				
	YFM 660R Raptor, Front	2001-05	YA 573*	S36PC1W	19	399	111	00480-15 <sup>2)</sup>	
	YFM 660R Raptor, Front	2001-05	YA 671*	S36PR1C2W	30	401,5	115	00480-16, 04060-30 <sup>2)</sup>	
	YFM 660R Raptor, Rear	2001	YA 177	S46PR1C1	17	364,5	105,5	00698-11	
	YFM 660R Raptor, Rear	2002-05	YA 273	S46PR1C1	17	364	106,5	00698-11	
	YFM 700R Raptor, Front	2006-08	YA 673*	S36PC1	21	408,5	110	00480-16, 04060-40	
	YFM 700R Raptor, Rear	2006-08	YA 674	S46PR1C1	17	385	118	00698-08	

\* These shocks are delivered as pairs.

1) Recommended spring, this spring is not delivered with the shock absorber

2) Recommended springs, these springs are not delivered with the shock absorbers, 2 of each is required per set of front shocks

# Snowmobile Shock Absorbers

Brand Model, type	Year	Front Part no	Type	P/C	Center Part no	Type	P/C	Rear Part no	Type	P/C
<b>ARCTIC CAT</b>										
Firecat F5/ F6/ F8/ F1000	2007	AC 720*	S36PR1C1	33	AC 721	S36PC1	10	AC 722	S36HR1C1W	15
Firecat F5/ F6/ F8/ F1000	2008	AC 720*	S36PR1C1	33	AC 831	S46PC2	19	AC 832	S46PR1C2W	17
Jaguar Z1	2007	AC 720*	S36PR1C1	33	AC 721	S36PC1	10	AC 722	S36HR1C1W	15
Jaguar Z1	2008	AC 720*	S36PR1C1	33	AC 831	S46PC2	19	AC 832	S46PR1C2W	17
Mountain Cat M5/M6/M7	2006	AC 515*	S36PR1C1	33						
Sno Pro 600	2008	AC 860*	S36PR1C2Q1	36	AC 861	S46PR1C2	19	AC 862	S46PR1C2W	17
<b>LYNX</b>										
Rave 440	2006-07	LY 630*	S36PR1C2	35	LY 631	S46PR1C2	19	LY 632	S46PR1C2Q1	25
Rave 550	2007-08	LY 630*	S36PR1C2	35	LY 631	S46PR1C2	19	LY 632	S46PR1C2Q1	25
Rave RC 600/800	2007-08	LY 630*	S36PR1C2	35	LY 631	S46PR1C2	19	LY 632	S46PR1C2Q1	25
Rave RE 600 HO	2007-08	LY 630*	S36PR1C2	35	LY 631	S46PR1C2	19	LY 632	S46PR1C2Q1	25
Rave Xtrim Racing	2008	LY 630*	S36PR1C2	35	LY 631	S46PR1C2	19	LY 632	S46PR1C2Q1	25
Rave RS 600	2008	LY 830*	S36PR1C2	35	LY 631	S46PR1C2	19	LY 632	S46PR1C2Q1	25
Rave RS 600	2009	LY 930*	S36PR1C2	35	LY 631	S46PR1C2	19	LY 632	S46PR1C2Q1	25
<b>POLARIS</b>										
440 IQ Racing	2006	PB 530*	S36PR1C2	35	PB 661	S46PC2	19	PB 662	S46PR1C2W	17
600 HO IQ/CFI	2007	PB 500*	S36PR1C2	35	PB 501	S36PC1	10	PB 502	S36HR1C1W	12
600 HO CFI IQ Touring	2007	PB 500*	S36PR1C2	35						
600, 900 Switchback	2006	PB 500*	S36PR1C2	35						
600 HO Switchback/CFI	2007	PB 500*	S36PR1C2	35						
FST Switchback	2007	PB 500*	S36PR1C2	35						
FST IQ	2007	PB 500*	S36PR1C2	35	PB 501	S36PC1	10	PB 502	S36HR1C1W	12
FS IQ Touring	2007	PB 500*	S36PR1C2	35						
FST IQ Cruiser	2007	PB 500*	S36PR1C2	35						
FST IQ Touring	2007	PB 500*	S36PR1C2	35						
Fusion	2005-06	PB 500*	S36PR1C2	35	PB 501	S36PC1	10	PB 502	S36HR1C1W	12
Pro X 440	2005	PB 530*	S36PR1C2	35						
<b>SKI-DOO</b>										
MXZ X	2008	SK 830*	S36PR1C2W <sup>h)</sup>	33	SK 831	S46PR1C2	19	SK 832	S46PR1C2W	17
MXZ X	2009	SK 930*	S36PR1C2	35	SK 831	S46PR1C2	19	SK 832	S46PR1C2W	17
<b>YAMAHA</b>										
Apex ER / GT, Scand. Setting	2006-08	YA 654*	S36PR1C2	35	-	-	-			
Apex ER / GT, US Setting	2006-08	YA 560*	S36PC1	24	-	-	-			
Apex ER / GT, US Setting	2006-08	YA 560*	S36PC1	24	-	-	-			
Apex RTX, Scand. Setting	2006	YA 654*	S36PR1C2	35	-	-	-			
Apex RTX, US Setting	2006	YA 560*	S36PC1	24	-	-	-			
Apex RTX, US Setting	2006	YA 560*	S36PC1	24	-	-	-			
Apex RTX, Scand. Setting	2007	YA 654*	S36PR1C2	35	YA 647	S36D	5	YA 648	S36PC1W	9
Mountain Max 700	2000-03				YA 211	S36D	5			
Nyro/ ER, Scand. Setting	2006-07	YA 654*	S36PR1C2	35	YA 647	S36D	5	YA 648	S36PC1W	9
Nyro/ ER, US Setting	2006-07	YA 560*	S36PC1	24				YA 562	S36PC1W	9
Nyro RTX / RTX SE	2008-09	YA 862*	S36PR1C2	35	YA 868	S46PR1C2	19	YA 869	S46PR1C2W	17
Nyro GTX	2009	YA 862*	S36PR1C2	35	YA 954	S46PR1C2	19	YA 955	S46PR1C2W	17
Phazer / FX/ GT	2007-08	YA 720*	S36PR1C2	35	YA 721	S36D	5	YA 722	S36PC1W	9
RS Rage	2005	YA 654*	S36PR1C2	35				YA 462	S36PR1C1	13
RS Rage /GT, Scand. Setting	2006-08	YA 654*	S36PR1C2	35	-	-	-			
RS Rage /GT, US Setting	2006-08	YA 560*	S36PC1	24	-	-	-			
RS Rage /GT, US Setting	2006-08	YA 560*	S36PC1	24	-	-	-			
RS Vector e), Scand. Setting	2005-06	YA 654*	S36PR1C2	35	YA 647	S36D	5	YA 648	S36PC1W	9
RS Vector e), US Setting	2005-06	YA 560*	S36PC1	24				YA 562	S36PC1W	9
RS Vector ER / GT, Scand. Setting	2006-08	YA 654*	S36PR1C2	35	-	-	-			
RS Vector ER / GT, US Setting	2006-08	YA 560*	S36PC1	24	-	-	-			
RS Vector ER / GT, US Setting	2006-08	YA 560*	S36PC1	24	-	-	-			
RS Vector ER SP	2006-07	YA 654*	S36PR1C2	35	YA 647	S36D	5	YA 648	S36PC1W	9
RX Warrior	2004-05							YA 462	S36PR1C1	13
RX Warrior/ Attak, Scand. Setting	2006-08	YA 654*	S36PR1C2	35	-	-	-			
RX Warrior/ Attak, US Setting	2006-08	YA 560*	S36PC1	24	-	-	-			
RX Warrior/ Attak, US Setting	2006-08	YA 560*	S36PC1	24	-	-	-			
SX Viper	2002-04							YA 642	S36D	5
SX Viper Mountain	2003-04				YA 211	S36D	5			
VIKING III	1999-02							YA 642	S36D	5
Alternative to YA 654		YA 655*	S36PC1	24						

e) With Pro Active Suspension

h) Recommended spring 00180-74

\* = These shocks are delivered as pairs

# Snowmobile Specifications

Part No	Type	Length	Stroke	Spring	P/C	Note
AC 515	S36PR1C1	446	152	00181-03	33	
AC 720	S36PR1C1	443	150,5	00180-53	33	
AC 721	S36PC1	299	92	00180-85	10	
AC 722	S36HR1C1W	368	117	N	15	
AC 831	S46PC2	297	90,5	01096-01	19	
AC 832	S46PR1C2W	366	112,5	N	17	
AC 860	S36PR1C2Q1	516	165,5	00281-48	36	
AC 861	S46PR1C2	310	86	01096-01	19	
AC 862	S46PR1C2W	368	109,5	N	17	
LY 630	S36PR1C2	463	159	00181-03	35	
LY 631	S46PR1C2	360,5	95,5	00698-13	19	
LY 632	S46PR1C2Q1	426,5	124,5	00596-17	25	
LY 830	S36PR1C2	448	154,5	00181-03	35	
LY 930	S36PR1C2	458	145	00181-03	35	
PB 530	S36PR1C2	466	162	00181-03	35	
PB 661	S46PC2	319,5	100,5	01096-88	19	
PB 662	S46PR1C2W	379	125,5	N	17	
SK 830	S36PR1C2W	432	133,5	(00180-74)	33	
SK 831	S46PR1C2	331,5	95,5	01096-88	19	
SK 832	S46PR1C2W	436,5	150,5	N	17	
SK 930	S46PR1C2	473,5	159,5	00180-74	35	
SK 940	S36D	431,5	132	00180-74	14	
YA 211	S36D	326	86	00180-85	5	
YA 462	S36PR1C1	485	166	00180-87	13	
YA 560	S36PC1	419,5	132	00180-84	24	
YA 562	S36PC1W	468	166	N	9	
YA 642	S36D	467	156	00180-87	5	
YA 647	S36D	336	97	00280-20	5	
YA 648	S36PC1W	468	166	N	9	
YA 654	S36PR1C2	419	135	00180-53	35	
YA 655	S36PC1	419,5	132	00180-53	24	
YA 720	S36PR1C2	404	125	00180-53	35	
YA 721	S36D	332	92,5	00180-79	5	
YA 722	S36PC1W	447	145,5	N	9	
YA 862	S36PR1C2	445	136,5	00281-46	35	
YA 868	S46PR1C2	327	87	01096-88	19	
YA 869	S46PR1C2W	425,5	139,5	N	17	
YA 954	S46PR1C2	339,5	99,5	01102-06	19	
YA 955	S46PR1C2W	429,5	145,5	N	17	

# Road&

Shock Absorbers  
Front Forks  
Front Fork Spring Kits  
Steering Dampers  
Fluids  
Grease  
and more...



# Track



Official Sponsor  
 **YAMAHA**  
MotoGP 2008

# Road&Track 2009

## TTX36 2009



The new upgraded TTX36 is based on the successful products used in MotoGP, WSBK, AMA in 2008. This new version is tuned to perfection with fresh valves for more consistent and improved dynamic behaviour and inside, a completely new piston guarantees for less internal friction. As a reminder of the racing heritage the damper is now improved with attachments for stroke sensors at the cylinder head and end-brackets.

### Features:

- Integrated Hydraulic Preload adjuster. (where possible to mount)
- Twin tube design.
- Smaller and lighter.
- Wide adjustment range (more powerful) external adjusters.
- Completely separated functions for compression and rebound.
- All adjustments made at top of the shock absorber.

**TTX**

## FGR 900



The FGR 900 is the very essence of front fork technology and is based on last year's successful predecessor FGR 800. This pressurized front fork, equipped with TTX technology is the very latest in front fork technology. The new, improved FGR 900 comes fully packed with technical solutions and experiences gained from MotoGP, WSB and AMA racing.

### Features:

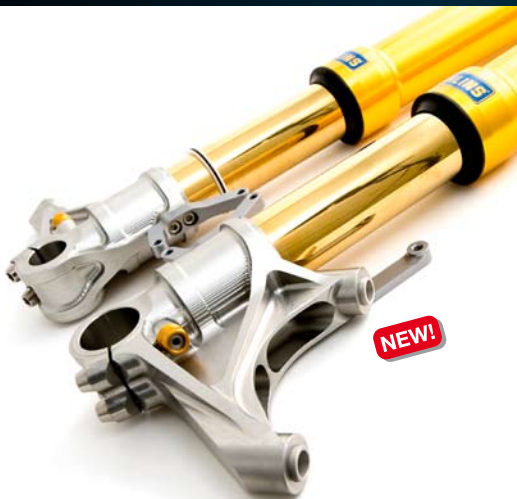
- New lighter and more rigid outer tubes.
- Compression damping.
- Rebound damping.
- Spring preload adjustment.

**TTX**



**PRESSURIZED SYSTEM**

## FG R/T



The new Road & Track Front Fork from Öhlins is nothing but a new born classic. It doesn't matter if you are heading for a national roadracing title or if you are taking your bike to the local café down the corner. The new front fork will give you loads of performance, stable damping characteristics and fantastic comfort. The new cartridge system inside the front fork is based on the popular FGK kits and the outer design has been significantly redesigned to make it even more attractive.

### Features:

- Weight optimized.
- Rebound- Compression and Spring load adjusters.
- One piece Design Fork Bottom for improved braking rigidity.
- Available for the whole 1000cc Hypersport segment.



# Road&Track Shock Absorbers 2009

## Type S36



S36E S36D S36DR1L S36K

## Type S36P



S36P S36PL S36PR1 S36PR1C1L S36PR1C1LB S36HR1C1L S36HR1C3L

## Type T36P



T36PR1C1LS T36PR1C1LB

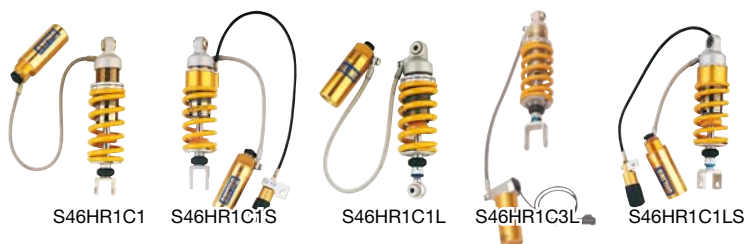


## Type S46



S46ER1/DR1 S46ER1S/DR1S S46DR1LS S46DR1L/DR1LS Custom

## Type S46H



S46HR1C1 S46HR1C1S S46HR1C1L S46HR1C3L S46HR1C1LS

## Type S46P



S46PR1C1W S46PR1C1L S46PR1C1S S46PR1C1I S46PR1C2L S46PR1C2S S46PR1C2LS S46PR1C1 S46PR1C1Q1 S46PR1C1LB S46PR1C1S S46PR1C2 S46PR1C2B S46PR1C2LB

**Note!** Your shock absorber could look different from the one pictured. The reservoir may be angled to fit your bike and a horizontal reservoir is used on some models.

## Steering Dampers



- Unique design.
- Fluid under pressure avoids the problem of free play.
- Adjustable in 16 clicks.
- Six lengths/strokes.
- Can be mounted outside of the fork leg or across the frame behind the triple clamp.
- Kits, complete with mounting brackets are available to certain bikes.
- All necessary hardware included.

## Preload Adjuster



- Hydraulic.
- Integrated type for S46 shocks.
- Part No. 03645-01 2:1 Left
- Part No. 03646-01 2:1 Right

## Front Fork Springs



- Designed to improve the performance of your standard fork.
- Give the right balance between your front fork and the Öhlins shock absorber.
- Tests show that approximately 10% harder springs normally work best, but on some bikes softer springs work better.
- Adds the final touch to your suspension tuning.

# R&T Shock Absorbers, Fork Spring Kits

Brand Mode, type	Year	Shock Absorber		P/C	Length	Stroke	Spring	Fork Spring	
		Part No.	Type					Part No.	P/C
<b>Aprilia</b>									
RSV 1000 Mille	1999-01	AP 840	S46R1C1LS	24	321 +5/-1	56	01093-54		
RSV 1000 Mille	2002-03	AP 841	S46R1C1LS	24	321 +6/-0	65	01093-31		
RSV 1000 R	2004	AP 351	S46R1C1LS	24	313 +3,5/-2,5	63,5	01093-31		
RSV 1000 Tuono	2003-04	AP 841	S46R1C1LS	24	321 +6/-0	65	01093-31		
RSV 1000 Tuono	2006	AP 351	S46R1C1LS	24	313 +3,5/-2,5	63,5	01093-31		
<b>BMW</b>									
F 650 GS	2000-06	BM 344	S46ER1S	16	316	50	01092-74		
F 650 GS Dakar, not ABS	2000-07	BM 048	S46HR1C1S	23	328,5	60,5	01095-69		
F 650 GS Dakar, ABS	2000-07	BM 750	S46HR1C1S	23	328,5	60,5	01095-69		
F 650 GS	2008	BM 801	S46DR1B	16	413,5	56,5	01092-69	08752-70	300
F 800 GS	2008	BM 802	S46DR1B	16	428,5	68,5	00698-69	08767-55	300
F 800 S/ST	2007-08	BM 706	S46DR1S	16	344,5	53,5	01092-89	08751-90	300
G 650 Xmoto	2007-08	BM 633	S46HR1C1	16	343,5	72,5	01099-49		
G 650 Xchallenge	2007-08	BM 636	S46HR1C1	16	360	89	00698-39		
HP2 Enduro	2006	BM 688	S46PR1C2Q1	23	415,5	108,5	00580-24		
K 1100 LT/ SE	1994-00	BM 420	S46PR1C1S	23	382	93	01099-09		
K 1100 RS	1994-97	BM 420	S46PR1C1S	23	382	93	01099-09		
K 1200 GT, Front	2003	BM 701	S36D	13	319	82	00180-58		
K 1200 GT, Front	2004-05	BM 507	S36D	13	326	82	00180-58		
K 1200 GT, Rear	2003-05	BM 318	S46HR1C1LS	24	355 +12/-0	57	01093-59		
K 1200 LT, Front	1999-08	BM 540	S36D	13	319	82	00180-56		
K 1200 LT, Rear	1999-03	BM 851	S46DR1S	16	400	55	01099-74		
K 1200 LT, Rear	2004-08	BM 539	S46DR1S	16	400	55	01099-74		
K 1200 R, Front	2005-08	BM 445	S46DR1	12	323,5	54,5	01093-49		
K 1200 R, Rear	2005-08	BM 502	S46PR1C1S	26	334	78	01092-29		
K 1200 R Sport, Front	2007-08	BM 445	S46DR1	12	323,5	54,5	01093-49		
K 1200 R Sport, Rear	2007-08	BM 502	S46PR1C1S	26	334	78	01092-29		
K 1200 RS, Front	1997-03	BM 701	S36D	13	319	82	00180-58		
K 1200 RS, Front	2004-06	BM 507	S36D	13	326	82	00180-58		
K 1200 RS, Rear	1997-06	BM 702	S46HR1C1LS	24	355 +12/-0	57	01093-59		
K 1200 S, Front	2005-08	BM 445	S46DR1	12	323,5	54,5	01093-49		
K 1200 S, Rear	2005-08	BM 446	S46PR1C1S	26	334	78	01092-34		
R 50/5	All	BM 141*	S36P	13	338	103	00480-03		
R 60/5	All	BM 141*	S36P	13	338	103	00480-03		
R 60/6	All	BM 141*	S36P	13	338	103	00480-03		
R 75/6	All	BM 141*	S36P	13	338	103	00480-03		
R 80 GS	1981-88	BM 317	S46PR1C1	16	361	89	00698-19		
R 80 GS	1989-94	BM 836	S46DR1S	16	495	80	00698-24		
R 80 GS	1989-94	BM 541	S46PR1C1S	23	498,5	78,5	00698-24		
R 80 RT	1977-84	BM 141*	S36P	13	338	103	00480-03		
R 80 RS/ RT	1985-93	BM 941	S46HR1C1	16	409	72	01096-21		
R 80 R	1992-95	BM 332	S46DR1S	16	474	74	01096-24		
R 850 GS, Front	1994-00	BM 425	S46ER1	13	335	92	01096-10		
R 850 GS, Rear	1994-00	BM 424	S46DR1S	16	383	63	01095-64		
R 850 R, Front	1996-02	BM 634	S46ER1	13	327	78	01096-10		
R 850 R, Rear	1996-02	BM 635	S46DR1LS	20	358 +10/-2	57	01093-74		
R 850 R, Front	2003-06	BM 050	S36DR1L	13	334 +6/-4	73	00180-44		
R 850 R, Rear	2003-06	BM 049	S46DR1S	16	366	56	01092-79		
R 90/ 6/ S	All	BM 141*	S36P	13	338	103	00480-03		
R 100 CS	All	BM 141*	S36P	13	338	103	00480-03		
R 100 GS/ PD	1987-94	BM 836	S46DR1S	16	495	80	00698-24		
R 100 GS/ PD	1987-94	BM 541	S46PR1C1S	23	498,5	78,5	00698-24		
R 100 R	1992-95	BM 332	S46DR1S	16	474	74	01096-24		
R 100 RT	-1986	BM 141*	S36P	13	338	103	00480-03		
R 100 RS/ RT	1985-93	BM 941	S46HR1C1	16	409	72	01096-21		
R 100 S	All	BM 141*	S36P	13	338	103	00480-03		
R 1100 GS, Front	1994-00	BM 425	S46ER1	13	335	92	01096-10		
R 1100 GS, Rear	1994-00	BM 424	S46DR1S	16	383	63	01095-64		
R 1100 R, Front	1996-00	BM 634	S46ER1	13	327	78	01096-10		
R 1100 R, Rear	1996-00	BM 635	S46DR1LS	20	358 +10/-2	57	01093-74		
R 1100 RS, Front	1993-01	BM 335	S46ER1	13	320	71	01096-10		
R 1100 RS, Rear	1993-01	BM 334	S46DR1	13	358	57	01092-64		
R 1100 RS, Rear	1993-01	BM 704	S46DR1S	16	358	57	01092-64		
R 1100 RT, Front	1996-01	BM 601	S46ER1	13	330	78	01096-10		
R 1100 RT, Rear	1996-01	BM 602	S46DR1LS	20	358 +10/-2	57	01093-74		
R 1100 S, Front	1999-05	BM 842	S36PR1	16	318	70	00180-44		
R 1100 S, Rear	1999-05	BM 205	S46R1C1LS	24	315 +12/-0	52	01093-59		

\* These shocks are delivered as pairs.

# R&T Shock Absorbers, Fork Spring Kits

Brand Mode, type	Year	Shock Absorber		P/C	Length	Stroke	Spring	Fork Spring	
		Part No.	Type					Part No.	P/C
<b>BMW</b>									
R 1150 GS, Front	2000-03	BM 425	S46ER1	13	335	92	01096-10		
R 1150 GS, Rear	2000-03	BM 940	S46DR1S	16	383	63	01095-54		
R 1150 GS, Rear	2000-03	BM 542	S46HR1C1S	23	383	63,5	01095-54		
R 1150 GS, Rear short	2000-03	BM 942	S46DR1S	16	375,5	55,5	01095-54		
R 1150 GS Adventure, Front	2002-05	BM 216	S46ER1	13	344,5	101,5	01096-10		
R 1150 GS Adventure, Rear	2002-05	BM 215	S46DR1S	16	390	70	01095-54		
R 1150 R, Front	2001-06	BM 050	S36DR1L	13	334 +6/-4	73	00180-44		
R 1150 R, Rear	2001-06	BM 049	S46DR1S	16	366	56	01092-79		
R 1150 RS, Front	2002-04	BM 335	S46ER1	13	320	71	01096-10		
R 1150 RS, Rear	2002-04	BM 201	S46DR1S	16	366	56	01092-69		
R 1150 RT, Front	2002-04	BM 124	S46ER1	13	330	78	01096-13		
R 1150 RT, Rear	2002-04	BM 125	S46DR1S	16	366	56	01092-69		
R 1200 GS, Front	2004-08	BM 437	S46ER1	13	337	94	01096-10		
R 1200 GS, Front Short	2004-08	BM 509	S46ER1	13	325	82	01096-10		
R 1200 GS, Rear	2004-08	BM 436	S46DR1S	16	403	78,5	00698-54		
R 1200 GS, Rear <sup>1)</sup>	2004-08	BM 543		26	403 +12/-0	78	00698-54		
R 1200 GS, Rear Short	2004-08	BM 508	S46DR1S	16	395	70,5	00698-54		
R 1200 GS Adventure, Front	2006-08	BM 607	S46ER1	13	347	95	01096-12		
R 1200 GS Adventure, Rear	2006-08	BM 606	S46PR1C1Q1S	25	410	83	00698-59		
R 1200 R, Front	2007-08	BM 709	S36DR1L	13	327 +8/-2	73	00180-44		
R 1200 R, Rear	2007-08	BM 708	S46R1C1LS	24	380 +12/-0	54	01092-79		
R 1200 RT, Front	2005-08	BM 503	S46ER1	13	330	78	01096-14		
R 1200 RT, Rear	2005-08	BM 504	S46DR1S	16	376	54	01092-69		
R 1200 ST, Front	2005-06	BM 505	S46ER1	13	288	64	01092-15		
R 1200 ST, Rear	2005-06	BM 506	S46DR1S	16	379	56	01092-69		

<sup>1)</sup> Does not fit the US model

\* These shocks are delivered as pairs.

## Buell

XB9R Firebolt	2002-05	BU 201	S46HR1C1LS	24	358 +11/-1	78	01092-24		
XB12R Firebolt	2004-05	BU 201	S46HR1C1LS	24	358 +11/-1	78	01092-24		

## Ducati

748	1994-99	DU 143	S46PR1C2B	27	305	71	01091-19	08627-90 7)	300
748	2000-02	DU 143	S46PR1C2B	27	305	71	01091-19		
748 Biposto	1995-99	DU 421	S46PR1C1	16	305	76	01091-18	08627-90 7)	300
748 Biposto	2000-01	DU 421	S46PR1C1	16	305	76	01091-18		
749	2003-05	DU 301	S46PR1C2B	26	305	71	01091-24		
750 SS	1991-02	DU 235	S46PR1C1L	17	328 +12/-0	68	01092-26		
750 Sport	2001-02	DU 235	S46PR1C1L	17	328 +12/-0	68	01092-26		
848	2008	DU 788	T36PR1C1B	29	294,5	60	21040-24	08761-95/ -10/ -05	300
900 SD	1978-84	DU 140*	S36P	13	331,5	93	00480-01		
900 SL/ SS	1991-99	DU 235	S46PR1C1L	17	328 +12/-0	68	01092-26	08600-90	300
900 SS	2000-02	DU 235	S46PR1C1L	17	328 +12/-0	68	01092-26	08677-90	300
900 Sport	2001-02	DU 235	S46PR1C1L	17	328 +12/-0	68	01092-26		
916	1994-98	DU 143	S46PR1C2B	27	305	71	01091-19	08627-90 7)	300
916	1999-00	DU 143	S46PR1C2B	27	305	71	01091-19		
916 Biposto	1995-98	DU 421	S46PR1C1	16	305	76	01091-18	08627-90 7)	300
916 Biposto	1999-00	DU 421	S46PR1C1	16	305	76	01091-18		
996	1999	DU 143	S46PR1C2B	27	305	71	01091-19	08627-90 7)	300
996	2000-01	DU 143	S46PR1C2B	27	305	71	01091-19		
996 Biposto	1999	DU 421	S46PR1C1	16	305	76	01091-18	08627-90 7)	300
996 Biposto	2000-01	DU 421	S46PR1C1	16	305	76	01091-18		
998	2002-03	DU 143	S46PR1C2B	27	305	71	01091-19		
999	2003-05	DU 301	S46PR1C2B	26	305	71	01091-24		
1098	2007	DU 788	T36PR1C1B	29	294,5	60	21040-24		
1098	2008	DU 788	T36PR1C1B	29	294,5	60	21040-24	08761-95/ -10/ -05	300
Darmah	1978-84	DU 140*	S36P	13	331,5	93	00480-01		
MH 900e	2001-02	DU 106	S46PR1C1L	17	325 +4/-2	84,5	01092-04		
Monster 600/ 750/ 900	1994-01	DU 440	S46HR1C1	16	330	65	01091-31		
Monster 620/ 750/ 900	2002	DU 046	S46PR1C1S	23	305	66	01091-34		
Monster 620/ 750/ 900	2002	DU 321	S46DR1	12	305	66	01091-34		
Monster 620/ 800/ 1000	2003-05	DU 046	S46PR1C1S	23	305	66	01091-34		
Monster 620/ 800/ 1000	2003-05	DU 321	S46DR1	12	305	66	01091-34		
Monster S2R 800	2005	DU 321	S46DR1	12	305	66	01091-34	08627-90	300
Monster S2R 1000	2005	DU 321	S46DR1	12	305	66	01091-34		
Monster S4	2001-05	DU 046	S46PR1C1S	23	305	66	01091-34	08643-90	300
Monster S4	2001-05	DU 321	S46DR1	12	305	66	01091-34	08643-90	300
Monster S4R	2003-05	DU 333	S46HR1C1S	23	305	35	01092-31		
Monster 696	2008	DU 737	S46DR1	12	294,5	58,5	01092-41		
Multistrada	2003-05	DU 303	S46PR1C1S	23	295,5	61,5	01092-36	08700-85	300
Replica	1978-84	DU 140*	S36P	13	331,5	93	00480-01		
SS	1978-84	DU 140*	S36P	13	331,5	93	00480-01		
ST 2/ ST 4	1997-00	DU 701	S46HR1C1S	23	305	63	01091-31	08643-90	300

<sup>7)</sup> The rate of the front fork springs are normally 10% stiffer than standard this one is softer though, since we achieved better performance during test.

\* These shocks are delivered as pairs.

# R&T Shock Absorbers, Fork Spring Kits

Brand Mode, type	Year	Shock Absorber		P/C	Length	Stroke	Spring	Fork Spring	
		Part No.	Type					Part No.	P/C
<b>Harley-Davidson</b>									
FLHRC-1	1998	HD 939*	S36K	21	329	84	03195-04		
FLHRS (Road King)		HD 538*	S36E	10	296	71	00360-06 (B)		
FLHRS (Road King)		HD 539*	S36E	10	296	71	00380-06 (Y)		
FLHRS (Road King)		HD 540*	S36E	10	296	71	21212-06 (C)		
FXD	1991-05	HD 215*	S36PR1C1LB	33	340 +5/-5	88	21180-01 (B)		
FXD	1991-06	HD 219*	S36PR1C1LB	33	305 +10/-0	64	00180-70 (Y)		
FXD	1991-06	HD 216*	S36E	9	305	65	21180-01 (B)		
FXD	1991-06	HD 616*	S36E	9	305	65	21210-23 (C)		
FXD	1991-05	HD 220*	S36E	9	340	88	21180-01 (B)		
FXD	1991-06	HD 218*	S36K	21	305	66	03195-08 (C)		
FXDWG	1993-05	HD 215*	S36PR1C1LB	33	340 +5/-5	88	21180-01 (B)		
FXDWG	1993-06	HD 219*	S36PR1C1LB	33	305 +10/-0	64	00180-70 (Y)		
FXDWG	1993-06	HD 216*	S36E	9	305	65	21180-01 (B)		
FXDWG	1993-06	HD 616*	S36E	9	305	65	21210-23 (C)		
FXDWG	1993-05	HD 220*	S36E	9	340	88	21180-01 (B)		
FXDWG	1993-06	HD 218*	S36K	21	305	66	03195-08 (C)		
Sportster	-2006	HD 141*	S36PL	16	336 +10/-0	98	00480-02		
Sportster	-2006	HD 143*	S36PR1C1LB	33	336 +10/-0	95	00380-04		
Sportster	-2003	HD 142*	S36PL	16	360 +10/-0	100	00480-01		
Sportster	-2003	HD 144*	S36PR1C1LB	33	360 +10/-0	101	00480-11		
Sportster	-2006	HD 145E*	S36E	9	296	71	00360-04 (B)		
Sportster	-2006	HD 645*	S36E	9	296	71	00380-04 (Y)		
Sportster	-2006	HD 745*	S36E	9	296	71	21212-04 (C)		
Sportster	-2006	HD 916E*	S36E	9	337	104	00480-02 (B)		
Sportster	-2006	HD 716*	S36E	9	337	104	21211-02 (C)		
Sportster	-2003	HD 146*	S36E	9	360,5	105	00480-01		
VRSCA V-Rod	2002-06	HD 202*	S36K	21	320	64	03195-08		
<b>Honda</b>									
Ape 50/100		HO 513	S36E	5	261	38	00281-38		
Ape 50/100		HO 511	S36HR1C1L	15	263 +2,5/-2,5	38	00281-39		
CB 400 Superfour	1992-93	HO 142*	S36P	13	330	88	00480-02		
CB 400 Superfour	1992-93	HO 145*	S36PR1C1LB	30	325 +10/-0	92	00380-04		
CB 600F Hornet	1998-02	HO 803	S46HR1C1	16	303	53	01093-64	08803-01/ -03	300
CB 600F Hornet	1998-02	HO 321	S46DR1	12	303,5	53,5	01093-64	08803-01/ -03	300
CB 600F Hornet	2003-04	HO 541	S46HR1C1L	17	304 +11,5/-0,5	53,5	01093-64	08803-02/ -04	300
CB 600F Hornet	2003-04	HO 803	S46HR1C1	16	303	53	01093-64	08803-02/ -04	300
CB 600F Hornet	2003-04	HO 321	S46DR1	12	303,5	53,5	01093-64	08803-02/ -04	300
CB 600F Hornet	2005-06	HO 519	S46HR1C1	16	304	54	01093-64	08717-80/ -85	300
CB 600F Hornet	2007-08	HO 707	S46HR1C1	16	307,5	50,5	01093-64	08747-90	300
CB 750 F	1980-84	HO 140*	S36P	13	364	97	00480-03		
CB 750 F	1980-84	HO 153E*	S36E	9	365	98	00380-05		
CB 750 KZ	1979-84	HO 140*	S36P	13	364	97	00480-03		
CB 750 KZ	1979-84	HO 153E*	S36E	9	364	97	00480-03		
CB 750 Seventifty	1992-94	HO 141*	S36P	13	356,5	98	00480-02		
CB 900	1979-84	HO 140*	S36P	13	364	97	00480-03		
CB 900	1979-84	HO 146*	S36PR1C1LB	30	358 +10/-0	92	00380-05		
CB 900	1979-84	HO 153E*	S36E	9	365	98	00480-03		
CB 900F Hornet	2002-03	HO 201	S46HR1C1S	23	283	50,5	01093-74	08686-85	300
CB 900F Hornet	2004-06	HO 201	S46HR1C1S	23	283	50,5	01093-74		
CB 1000 BIG	1993-97	HO 143*	S36P	13	356,5	92	00480-03	08833-01	300
CB 1000 BIG	1993-97	HO 144*	S36PR1C1LB	30	358 +10/-0	92	00480-13	08833-01	300
CB 1100 F	1982-85	HO 140*	S36P	13	364	97	00480-03		
CB 1100 F	1982-85	HO 153E*	S36E	9	365	98	00380-05		
CB 1100 R	1981-84	HO 140*	S36P	13	364	97	00480-03		
CB 1100 R	1981-84	HO 153E*	S36E	9	365	98	00380-05		
CB 1300	1999-01	HO 147*	S36PR1C1LB	30	310 +10/-0	71	00180-57		
CB 1300	2003-06	HO 150*	S36PR1C1LB	30	365 +8/-2	94	00480-13		
CB 1300	2003-06	HO 414*	S36PR1C1L	30	365 +8/-2	92	00480-23 (B)		
CB 1300	2003-06	HO 417*	S36PR1C1L	30	365 +8/-2	92	00480-33 (Y)		
CBF 600 SA	2008	HO 809	S46DR1S	16	310	45,5	01092-84		
CBF 1000	2006-07	HO 603	S46HR1C1S	23	293,5	56,5	01093-69	08757-85	300
CBR 600 F	1987-90	HO 715	S46HR1C1	16	292	50	01093-69		
CBR 600 RR	2003-04	HO 301	S46PR1C2LS	30	313,5 +0/-6	59,5	01093-31	08694-90/ -95/ -10	300
CBR 600 RR	2005-06	HO 502	S46PR1C2LS	30	310,5 +3/-3	59,5	01093-31	08715-90/ -95/ -10	300
CBR 600 RR	2007	HO 608	S46PR1C2LS	30				08747-90/ -95/ -10	300
CBR 600 RR	2007	HO 607	T36PR1C1LS	35	295 +6/-0	60	21040-31	08747-90/ -95/ -10	300
CBR 600 RR	2008	HO 789	T36PR1C1LS	30	295 +6/-0	60	21040-31	08747-90/ -95/ -10	300

\* These shocks are delivered as pairs.

# R&T Shock Absorbers, Fork Spring Kits

Brand Mode, type	Year	Shock Absorber				Fork Spring			
		Part No.	Type	P/C	Length	Stroke	Spring	Part No.	P/C
<b>Honda</b>									
CBR 900 RR	1992-93	HO 149	S46HR1C1L	17	319 +12/-0	54	01092-59	08620-90	300
CBR 900 RR	1994-95	HO 149	S46HR1C1L	17	319 +12/-0	54	01092-59	08635-90	300
CBR 900 RR	1996-97	HO 601	S46HR1C1L	17	305 +12/-0	60	01092-59	08635-90	300
CBR 900 RR	1998-99	HO 802	S46HR1C1L	17	303 +12/-0	57	01093-59	08635-90	300
CBR 900 RR / 929	2000-01	HO 152	S46PR1C2LS	30	286 +4/-2	57	01093-59	08664-95	300
CBR 900 RR / 954	2002-03	HO 202	S46PR1C2LS	30	288 +2/-4	57	01093-59	08665-85/ -90/ -95	300
CBR 1000 RR	2004-05	HO 347	S46PR1C2LS	30	314 +6/-0	58	01093-39	08704-95/ -10	300
CBR 1000 RR	2006-07	HO 604	S46PR1C2LS	30	314 +6/-0	58	01093-44	08704-95/ -10	300
CBR 1000 RR	2008	HO 788	T36PR1C1LS	30	302 +4/-2	60	21040-44	08672-95/ -10	300
CBR 1100 XX	1997-00	HO 639	S46HR1C1S	23	319	52	01092-69	08633-95	300
CBR 1100 XX	2001-06	HO 518	S46HR1C1S	23	319	52	01092-69	08633-95	300
CBX 1000	1978-81	HO 140*	S36P	13	364	97	00480-03		
CBX 1000	1978-81	HO 153E*	S36E	9	365	98	00480-03		
Foresight FEZ 250	1998-00	HO 839	S36E	5	400	125	00480-11		
NSR Mini		HO 418	S36HR1C1L	15	217 +9/-1	34	00282-04		
NSR 250 R/ RK	1990-91	HO 014	S46HR1C1L	17	302 +6/-6	50	01093-49		
NSR 250 R-SE	1990-93	HO 206	S46HR1C1L	17	302 +6/-6	50	01093-49		
NSR 250 R-SP	1994-	HO 206	S46HR1C1L	17	302 +6/-6	50	01093-49		
RS 125	1998-08	HO 406	S46PR1C1L	17	305 +7/-5	54	01093-21		
VFR 800 FI	1998-01	HO 801	S46HR1C1S	23	325	58	01092-59	08644-80	300
VFR 800 FI	2002-05	HO 203	S46DR1S	16	317,5	53,5	01092-69	08687-85	300
VFR 800 FI	2002-05	HO 605	S46HR1C1LS	24	317,5 +6/-0	54,5	01092-69	08687-85	300
VFR 800 FI	2006	HO 203	S46DR1S	16	317,5	53,5	01092-69	08726-85	300
VFR 800 FI	2006	HO 605	S46HR1C1LS	24	317,5 +6/-0	54,5	01092-69	08726-85	300
VTR 1000 F	1997-06	HO 701	S46HR1C1S	23	346	60	01092-64	08805-01	300
VTR 1000 SP2 / RC 51	2002-06	HO 204	S46PR1C2LS	30	326 +10/-2	63	01092-29	08662-10	300
XL 700 V Transalp	2008	HO 823	S46ER1S	16	316,5	65,5	01092-59		
XL 1000 V Varadero	1999-02	HO 851	S46HR1C1S	23	338	65	01095-54	08655-70	300
XL 1000 V Varadero	2003-06	HO 533	S46HR1C1S	23	334	55	01095-69	08725-85	300
XRV 750	1995-02	HO 645	S46HR1C1S	23	380	90	01096-26		
<b>Kawasaki</b>									
ER-6	2006-08	KA 602	S46DR1	12	290,5	56,5	01093-69	08705-85	300
GPZ 500	1980-85	KA 143*	S36P	13	344	92	00480-02		
GPZ 900 Racing	1984-98	KA 634	S46HR1C1LS	24	325 +12/-0	62	01091-21		
GPZ 900 R	1984-89	KA 543	S46ER1S	16	310	67	01091-21	08460-85	300
GPZ 900 R	1984-89	KA 449	S46HR1C1LS	24	310,5 +12/-0	57	01093-21	08460-85	300
GPZ 900 R	1990-98	KA 543	S46ER1S	16	310	67	01091-21	08841-01	300
GPZ 900 R	1990-98	KA 449	S46HR1C1LS	24	310,5 +12/-0	57	01093-21	08841-01	300
GPZ 900 R	1999-00	KA 914	S46HR1C1LS	24	315 +12/-0	66	01091-26	08669-90	300
GPZ 900, Racing 17"	1999-00	KA 203	S46HR1C1LS	24	330,5 +10/-2	67,5	01091-29		
GTR 1400	2008	KA 709	S46PR1C1S	25	355,5	70,5	01095-49	08769-13	300
KSR 110		KA 607	S36HR1C1L	15	235 +7/-3	34	00282-05		
Ninja 250 R	2009	KA 840	S36HR1C1L	15	320 +6/-2	63	00281-57		
VN 900 Classic	2006-07	KA 760	S46DR1LS	20	324,5 0/-12	45,5	21118-39	08858-01	302
VN 900 Classic	2006-07	KA 761	S46DR1L	13	324,5 0/-12	45,5	21118-39	08858-01	302
VN 900 Custom	2007	KA 760	S46DR1LS	20	324,5 0/-12	45,5	21118-39	08859-01	302
VN 900 Custom	2007	KA 761	S46DR1L	13	324,5 0/-12	45,5	21118-39	08859-01	302
VN 1500 Classic	1997	KA 935*	S36K	21	320	79	03195-08		
VN 2000	2004-08	KA 762	S46DR1LS	20	320,5 0/-12	33,5	21117-69	08860-01	302
VN 2000	2004-08	KA 763	S46DR1L	13	320,5 0/-12	33,5	21117-69	08860-01	302
W 650	1999-03	KA 224*	S36D	9	325	93	00360-04		
W 650, short	1999-03	KA 632*	S36E	9	296	71	00360-05		
Z 400 J	1980-85	KA 143*	S36P	13	344	92	00480-02		
Z 400 J	1980-85	KA 147*	S36PR1C1LB	30	344 +10/-0	92	00480-12		
Z 400 J	1980-85	KA 747*	S36PR1C1L	30	344 +10/-0	89	00480-12		
Z 500/ 500 GP	1980-85	KA 143*	S36P	13	344	92	00480-02		
Z 500/ 500 GP	1980-85	KA 147*	S36PR1C1LB	30	344 +10/-0	92	00480-12		
Z 500/ 500 GP	1980-85	KA 747*	S36PR1C1L	30	344 +10/-0	89	00480-12		
Z 750 GP	1982-86	KA 140*	S36P	13	347	92	00480-03		
Z 750 GP	1982-86	KA 146*	S36PR1C1LB	30	347 +10/-0	92	00480-13		
Z 750 L/ Sport	1982-85	KA 143*	S36P	13	344	92	00480-02		
Z 750 L/ Sport	1982-85	KA 147*	S36PR1C1LB	30	344 +10/-0	92	00480-12		
Z 750 L/ Sport	1982-85	KA 747*	S36PR1C1L	30	344 +10/-0	89	00480-12		
Z 750	2004-05	KA 541	S46PR1C1L	19	328 +10,5/-1,5	68,5	01091-31	08705-90	300
Z 750	2004-05	KA 347	S46PR1C1	18	328	69	01091-31	08705-90	300
Z 750 S	2005	KA 541	S46PR1C1L	19	328 +10,5/-1,5	68,5	01091-31	08718-90	300
Z 750 S	2005	KA 347	S46PR1C1	18	328	69	01091-31	08718-90	300
Z 750	2008	KA 735	S46PR1C2	21	332	68	01091-31	08693-95	300
Z 900	1973-76	KA 140*	S36P	13	347	92	00480-03		
Z 900	1973-76	KA 146*	S36PR1C1LB	30	347 +10/-0	92	00480-13		

\* These shocks are delivered as pairs.

# R&T Shock Absorbers, Fork Spring Kits

Brand Mode, type	Year	Shock Absorber		P/C	Length	Stroke	Spring	Fork Spring		
		Part No.	Type					Part No.	P/C	
<b>Kawasaki</b>										
Z 1000	1977-85	KA 140*	S36P	13	347	92	00480-03			
Z 1000	1977-85	KA 146*	S36PR1C1LB	30	347 +10/-0	92	00480-13			
Z 1000	2003-05	KA 302	S46PR1C1LS	24	337 +10,5/-1,5	68	01091-34	08696-90		300
Z 1000	2007	KA 734	S46PR1C2LS	30	332,5 +12/-0	67	01091-34	08754-95		300
Zephyr 400/ 750	1991-96	KA 143*	S36P	13	344	92	00480-02			
Zephyr 400/ 750	1991-96	KA 147*	S36PR1C1LB	30	344 +10/-0	92	00480-12			
Zephyr 400/ 750	1991-96	KA 747*	S36PR1C1L	30	344 +10/-0	89	00480-12			
Zephyr 1100	1992-96	KA 140*	S36P	13	347	92	00480-03			
Zephyr 1100	1992-96	KA 146*	S36PR1C1LB	30	347 +10/-0	92	00480-13			
Zephyr 1100	1992-96	KA 446*	S36PR1C1L	30	347 +10/-0	92	00480-23 (B)			
Zephyr 1100	1992-96	KA 448*	S36PR1C1L	30	347 +10/-0	92	00480-33 (Y)			
ZRX 400	1994-96	KA 141*	S36P	13	360,5	96	00480-02			
ZRX 400	1994-96	KA 148*	S36PR1C1LB	30	360 +10/-0	94	00480-12			
ZRX 1100	1997-99	KA 151*	S36PR1C1LB	30	365 +8/-2	94	00480-13	08622-80		300
ZRX 1100	1997-99	HO 414*	S36PR1C1L	30	365 +8/-2	92	00480-23 (B)	08622-80		300
ZRX 1100	1997-99	HO 417*	S36PR1C1L	30	365 +8/-2	92	00480-33 (Y)	08622-80		300
ZRX 1200	2001	KA 149*	S36PR1C1LB	30	365 +8/-2	94	00480-33	08678-80		300
ZRX 1200	2001	KA 416*	S36PR1C1L	30	365 +8/-2	92	00480-23 (B)	08678-80		300
ZRX 1200	2001	KA 417*	S36PR1C1L	30	365 +8/-2	92	00480-33 (Y)	08678-80		300
ZRX 1200	2002	KA 149*	S36PR1C1LB	30	365 +8/-2	94	00480-33	08691-90		300
ZRX 1200	2002	KA 416*	S36PR1C1L	30	365 +8/-2	92	00480-23 (B)	08691-90		300
ZRX 1200	2002	KA 417*	S36PR1C1L	30	365 +8/-2	92	00480-33 (Y)	08691-90		300
ZRX 1200	2003-05	KA 149*	S36PR1C1LB	30	365 +8/-2	94	00480-33			
ZRX 1200	2003-05	KA 416*	S36PR1C1L	30	365 +8/-2	92	00480-23 (B)			
ZRX 1200	2003-05	KA 417*	S36PR1C1L	30	365 +8/-2	92	00480-33 (Y)			
ZX 6 R	2003	KA 301	S46PR1C2S	29	340	74	01091-34	08693-85/ -90/ -95/ 10		300
ZX 6 RR	2003	KA 301	S46PR1C2S	29	340	74	01091-34	08693-85/ -90/ -95/ 10		300
ZX 6 R	2004	KA 301	S46PR1C2S	29	340	74	01091-34	08701-80/ -85/ -90/ -95/ -10		300
ZX 6 RR	2004	KA 301	S46PR1C2S	29	340	74	01091-34	08701-80/ -85/ -90/ -95/ -10		300
ZX 6 R	2005-06	KA 502	S46PR1C2LS	30	335,5 +11/-1	64,5	01093-34	08714-95/ -10		300
ZX 6 RR	2005-06	KA 503	S46PR1C2LS	30	330 +12/-0	63,5	01093-34	08713-95/		300
ZX 6 R	2007	KA 646	S46PR1C2LS	30	343 +6/-0	64	01093-29	08748-90/ -95/ -10		300
ZX 6 R	2008	KA 789	T36PR1C1LS	30	340 +6/-0	67	21040-31	08748-90/ -95/ -10		300
ZX 6 R	2009	KA 889	T36PR1C1LB	30				08748-90/ -95/ -10		300
ZX 9 R	1994-95	KA 403	S46HR1C1S	23	348	79	01092-21			
ZX 9 R	1996-97	KA 403	S46HR1C1S	23	348	79	01092-21			
ZX 9 R	2002-03	KA 208	S46PR1C1S	25	338,5	67,5	01091-34	08661-90/ -95/ -10		300
ZX 10 R	2004-05	KA 345	S46PR1C2LS	30	338 +12/-0	74	01091-31	08702-10		300
ZX 10 R	2006-07	KA 540	S46PR1C2LS	30	338 +5,5/-0,5	67	01091-29	08728-95/ -10		300
ZX 10 R	2008-09	KA 788	T36PR1C1LS	30	338 +5/-1	64	21040-29	08759-95/ -10		300
ZX 12 R	2000-01	KA 942	S46R1C1LS	26	338 +12/-0	67	01095-39	08667-95		300
ZX 12 R	2002-05	KA 209	S46R1C1LS	26	338 +12/-0	67	01092-34	08667-95		300
ZZ-R 1100	1990-92	KA 003	S46HR1C1S	23	314,5	67	01091-26			
ZZ-R 1100	1993-99	KA 309	S46HR1C1S	23	338	67	01096-29	08606-10		300
ZZ-R 1200	2002-05	KA 202	S46ER1S	16	343,5	74,5	01095-39			
ZZ-R 1400	2006-07	KA 544	S46HR1C1LS	24	329 +7/-5	65	01091-31			
ZZ-R 1400	2008	KA 544	S46HR1C1LS	24	329 +7/-5	65	01091-31	08768-95		300
<b>Moto-Guzzi</b>										
1000 SP II	All	MG 140*	S36P	13	336	101	00480-03			
850 T5	All	MG 140*	S36P	13	336	101	00480-03			
Le Mans III 850	All	MG 140*	S36P	13	336	101	00480-03			
<b>MV Agusta</b>										
F4	2008-09	MV 788	T36PR1C1S	29	304,5	70	21040-31			
<b>Suzuki</b>										
B-King	2007-08	SU 716	S46PR1C1LB	26	321 +12/-0	70,5	01092-34	08768-95		300
C1800R	2008	SU 813	S46DR1LS	20	323,5	43,5	21118-89	08861-01		302
C1800R	2008	SU 814	S46DR1L	13	323,5	43,5	21118-89	08861-01		302
C800	2005-07	SU 708	S46DR1LS	20	310 0/-12	46,5	21118-44	08852-01		302
C800	2005-07	SU 709	S46DR1L	13	310 0/-12	46,5	21118-44	08852-01		302
C1500	2005-07	SU 706	S46DR1LS	20	311 0/-12	49,5	21118-29	08855-01		302
C1500	2005-07	SU 707	S46DR1L	13	311 0/-12	49,5	21118-29	08855-01		302
DL 650 V-Strom	2004-08	SU 823	S46DR1S	16	340,5	71,5	01096-31	08771-80		300
DL 1000 V-Strom	2002	SU 201	S46PR1C1S	25	345	75,5	01096-34	08688-90		300
DL 1000 V-Strom	2002	SU 508	S46DR1	12	345	75,5	01096-34	08688-90		300
DL 1000 V-Strom	2003-07	SU 201	S46PR1C1S	25	345	75,5	01096-34			
DL 1000 V-Strom	2003-07	SU 508	S46DR1	12	345	75,5	01096-34			
DR-Z 400SM	2005-07	SU 506	S46PR1C2	17	447	124,5	00596-13	08720-55		300

\* These shocks are delivered as pairs.

# R&T Shock Absorbers, Fork Spring Kits

Brand Mode, type1	Year	Shock Absorber				Fork Spring			
		Part No.	Type	P/C	Length	Stroke	Spring	Part No.	P/C
<b>Suzuki</b>									
GS 400/ 400 L	-1984	SU 324E*	S36E	9	327	92	00480-02		
GS 500 E	1978-83	SU 324E*	S36E	9	327	92	00480-02		
GS 650 E/ L	1980-82	SU 324E*	S36E	9	327	92	00480-02		
GS 750 E	1977-84	SU 143*	S36P	13	331	83	00480-03		
GS 750 L	1977-81	SU 143*	S36P	13	331	83	00480-03		
GS 750 S	1979-84	SU 143*	S36P	13	331	83	00480-03		
GS 1000 E/ H/ L/ S	1979-82	SU 143*	S36P	13	331	83	00480-03		
GS 1000 E/ H/ L/ S	1979-82	SU 145*	S36PR1C1LB	30	330,5 +10/-0	83	00380-05		
GSF 650 Bandit, Not ABS models	2005-06	SU 504	S46DR1S	16	319,5	65,5	01095-31	08719-85	300
GSF 650 Bandit, ABS models	2005-06	SU 504	S46DR1S	16	319,5	65,5	01095-31	08752-85	300
GSF 650 Bandit, Not ABS models	2007	SU 728	S46DR1S	16	319,5	63,5	01095-49	08719-85	300
GSF 650 Bandit, ABS models	2007	SU 728	S46DR1S	16	319,5	63,5	01095-49	08752-85	300
GSF 1200 Bandit	1996-00	SU 601	S46HR1C1S	23	306	64	01091-29	08842-01	300
GSF 1200 Bandit	2001-05	SU 049	S46R1C1LS	26	320 +6/-0	61	01095-44	08674-90	300
GSF 1250 Bandit	2007	SU 715	S46HR1C1LS	24	320 +6/-0	62,5	01092-29		
GSR 600	2006-08	SU 604	S46PR1C1L	16	338	71	01091-29	08729-80/ -85	300
GSX 400 E/ F	1977-84	SU 324E*	S36E	9	327	92	00480-02		
GSX 650F, Not ABS models	2008	SU 728	S46DR1S	16	319,5	63,5	01095-49	08719-85	300
GSX 650F, ABS models	2008	SU 728	S46DR1S	16	319,5	63,5	01095-49	08752-85	300
GSX 750 F	1989-92	SU 846	S46ER1S	16	298	65	01093-34		
GSX 750 R	1988	SU 003	S46HR1C1L	17	312 +12/-0	67	01091-16		
GSX 750 R	1989	SU 003	S46HR1C1L	17	312 +12/-0	67	01091-16	08816-01	300
GSX 750 R	1990	SU 003	S46HR1C1L	17	312 +12/-0	67	01091-16	08606-75	300
GSX 750 R	1991	SU 003	S46HR1C1L	17	312 +12/-0	67	01091-16		
GSX 750 R W	1992-95	SU 003	S46HR1C1L	17	312 +12/-0	67	01091-16		
GSX-R 600	2001-03	SU 149	S46PR1C2LS	30	325,5 +6/-0	74	01091-18	08671-90/ -95/ -10	300
GSX-R 600	2004-05	SU 347	S46PR1C2LS	30	332,5 +6/-0	74	01091-26	08656-95/ -10	300
GSX-R 600	2006-08	SU 789	T36PR1C1LS	30	320 +3/-3	63	21040-29	08724-90/ -95/ -10	300
GSX-R 750	2000-03	SU 153	S46PR1C2LS	30	325 +6/-0	74	01091-19	08665-85/ -90/ -95	300
GSX-R 750	2004-05	SU 347	S46PR1C2LS	30	332,5 +6/-0	74	01091-26	08656-95/ -10	300
GSX-R 750	2006-08	SU 789	T36PR1C1LS	30	320 +3/-3	63	21040-29	08724-90/ -95/ -10	300
GSX-R 1000	2001-02	SU 148	S46PR1C2LS	30	329 +5/-1	74	01091-24	08672-95	300
GSX-R 1000	2003-04	SU 302	S46PR1C2LS	30	332,5 +6/-0	74	01091-26	08697-90/ -95/ -10	300
GSX-R 1000	2005-06	SU 503	S46PR1C2LS	30	325,5 +6/-0	70	01091-29	08697-90/ -95/ -10	300
GSX-R 1000	2007	SU 638	T36PR1C1LS	30	313,5 +3,5/-2,5	63	21040-36	08744-95/ -10/ -05	300
GSX-R 1000	2008	SU 788	T36PR1C1LB	30	315 +2/-2	63	21040-36	08744-95/ -10/ -05	300
GSX 1100	1979-83	SU 143*	S36P	13	331	83	00480-03		
GSX 1100	1979-83	SU 145*	S36PR1C1LB	30	330,5 +10/-0	83	00380-05		
GSX 1100 Katana	1981-83	SU 143*	S36P	13	331	83	00480-03	08599-85	300
GSX 1100 Katana	1981-83	SU 145*	S36PR1C1LB	30	330,5 +10/-0	83	00380-05	08599-85	300
GSX 1100 R	1986-88	SU 635	S46HR1C1	16	315	69	01095-21		
GSX 1100 R	1989	SU 002	S46HR1C1	16	312	70	01092-29	08815-01	300
GSX 1100 R	1990-92	SU 002	S46HR1C1	16	312	70	01092-29	08606-90	300
GSX 1100 R W	1993-94	SU 248	S46HR1C1	16	312	70	01092-29	08606-90	300
GSX 1300 R Hayabusa	1999-07	SU 841	S46PR1C1S	26	330	72	01095-44	08656-90	300
GSX 1300 R Hayabusa	1999-07	SU 406	S46PR1C2LS	30	330 +10/-0	68	01092-41	08656-90	300
GSX 1300 R Hayabusa	2008	SU 717	S46PR1C1LS	26	330 +5/-1	67,5	01095-54		
GSX 1300 R Hayabusa	2008	SU 718	S46PR1C2LS	30	330 +5/-1	67,5	01095-54		
GSX 1400	2001-07	SU 133*	S36PR1C1LB	30	328 +10/-0	91	00380-06		
Impuls 400	1994-96	YA 138*	S36PR1C1LB	30	321 +10/-0	84	00380-04		
M800	2005-07	SU 710	S46DR1LS	20	311,5 0/-12	49,5	21118-44	08854-01	302
M800	2005-07	SU 711	S46DR1L	13	311,5 0/-12	49,5	21118-44	08854-01	302
M1800R	2006-08	SU 713	S46DR1LS	20	332,5 0/-12	47,5	21119-74	08857-01	302
M1800R	2006-08	SU 714	S46DR1L	13	332,5 0/-12	47,5	21119-74	08857-01	302
M1800R2	2008	SU 713	S46DR1LS	20	332,5 0/-12	47,5	21119-74	08857-01	302
M1800R2	2008	SU 714	S46DR1L	13	332,5 0/-12	47,5	21119-74	08857-01	302
RE-5	1975-77	SU 143*	S36P	13	331	83	00480-03		
RE-5	1975-77	SU 145*	S36PR1C1LB	30	330,5 +10/-0	83	00380-05		
RGV 250	1989-93	SU 904	S46HR1C1L	17	307 +5/-7	55	01093-19		
SV 650	1999-02	SU 852	S46HR1C1L	17	337 +12/-0	63	01091-31	08657-80/ -85	300
SV 650, not ABS	2003-07	SU 323	S46DR1	12	330	70	01096-21	08698-80/ -85	300
SV 650, not ABS	2003-07	SU 606	S46PR1C1L	17	330 +12/-0	70	01096-21	08698-80/ -85	300
TL 1000 R	1998-01	SU 806	S46PR1C1	24	253	49	01093-89		
TL 1000 S	1997-98	SU 805	S46PR1C1W	17	280	50	x	08651-85	300
VL800	2001-04	SU 708	S46DR1LS	20	310 0/-12	46,5	21118-44	08853-01	302
VL800	2001-04	SU 709	S46DR1L	13	310 0/-12	46,5	21118-44	08853-01	302
VL1500	1997-04	SU 706	S46DR1LS	20	311 0/-12	49,5	21118-29	08856-01	302
VL1500	1997-04	SU 707	S46DR1L	13	311 0/-12	49,5	21118-29	08856-01	302
XF 650 Freewind	1997-01	SU 702	S46HR1C1S	23	340	83	01095-31		

\* These shocks are delivered as pairs.

# R&T Shock Absorbers, Fork Spring Kits

Brand Mode, type	Year	Shock Absorber			P/C	Length	Stroke	Spring	Fork Spring	
		Part No.	Type						Part No.	P/C
<b>Triumph</b>										
675 Street Triple	2008	TR 805	S46PR1C1L	19	290,5 +6/-0	57,5	01093-44	08693-90		300
1050 Speed Triple	2008	TR 807	S46PR1C1LB	26	371,5 +12/-0	61,5	01095-54	08770-95		300
Bonneville	2001-03	TR 326*	S36E	9	341	101	00480-03			
Daytona 675	2006-08	TR 602	S46PR1C2LS	30	294 +5,5/-0,5	54,5	01093-44	08727-85/ -90/ -10		300
Daytona 955i	2003	TR 702	S46HR1C1LS	24	371 +12/-0	62	01095-54			
Speed Triple	2005-06	TR 502	S46HR1C1LB	23	371+12/-0	61,5	01095-54			
Sprint ST	2006-07	TR 703	S46PR1C1LS	24	350 +6/-0	53,5	01095-54	08755-90		300
T509 Speed Triple	1997-99	TR 702	S46HR1C1LS	24	371 +12/-0	62	01095-54	08635-90		300
T595 Daytona	1997-99	TR 702	S46HR1C1LS	24	371 +12/-0	62	01095-54	08635-90		300
Thruxton	2005	TR 538	S36DR1L	20	375	101	00480-03			
Tiger 1050	2007	TR 704	S46HR1C1B	23	350	62,5	01095-44	08756-70		300
<b>Yamaha</b>										
BT 1100 Bulldog	2002-05	YA 203	S46ER1S	16	300,5	63,5	01092-49	08684-85		300
FJR 1300 (not ABS)	2001-05	YA 052	S46PR1C1S	25	325	62	01092-34	08679-90/ -10		300
FJR 1300 (ABS)	2003-05	YA 342	S46PR1C1S	25	325	62	01092-34	08679-90/ -10		300
FJR 1300	2006-08	YA 707	S46HR1C1S	23	326,5	62,5	01092-49	08679-90/ -10		300
FZ6	2004-07	YA 543	S46HR1C1L	17	305 +11,5/-0,5	58,5	01092-54	08711-80/ -85		300
FZ6	2004-07	YA 402	S46HR1C1	16	305	58	01092-54	08711-80/ -85		300
FZ6 S2	2007	YA 723	S46HR1C1	16	305	58	01092-54	08711-80/ -85		300
FZ1	2006-07	YA 628	S46HR1C1S	23	320,5	67,5	01095-44	08656-90		300
FZR 1000	1989-90	YA 828	S46HR1C1	16	340	70	01096-21	08610-85		300
FZR 1000	1991-93	YA 828	S46HR1C1	16	340	70	01096-21	08811-01		300
FZR 1000	1994-95	YA 828	S46HR1C1	16	340	70	01096-21			
FZS 600 Fazer	1998	YA 802	S46HR1C1	16	305	58	01093-64	08807-01		300
FZS 600 Fazer	1999-03	YA 802	S46HR1C1	16	305	58	01093-64			
FZS 1000 Fazer	2001-05	YA 050	S46PR1C1S	23	306	68	01091-26	08675-85/ -90		300
Majesty	1998-05	YA 004*	S36E	9	346	101	00280-10			
Majesty	2007	YA 759	S46DR1	12	310	49	01093-44			
MT 01	2005-08	YA 501	S46PR1C1	20	311	56	01092-64	08721-10		300
MT 03	2006	YA 629	S46DR1	12	364	55,5	01093-44	08730-80		300
RD 350	1979-82	YA 051	S46DR1	13	315	61	01091-26			
RD 500 LC	1984-86	YA 438	S46HR1C1	16	293	47	01093-39			
SR 500	All	YA 952E*	S36E	9	320	82	00480-02			
SR 500	All	YA 148*	S36P	13	320	82	00480-02			
SRX 400	-1989	YA 144*	S36P	13	303	90	00480-01			
SRX 400	1990	YA 005	S46HR1C1L	17	292 +11/-1	45	01093-54			
SRX 600	-1989	YA 144*	S36P	13	303	90	00480-01			
SRX 600	1990	YA 005	S46HR1C1L	17	292 +11/-1	45	01093-54			
TDM 850	1991-00	YA 151	S46PR1C1	16	300,5	57	01093-79			
TRX 850	1996-00	YA 524	S46HR1C1LS	24	348 +12/-0	64	01091-26	08608-80		300
TZR 250 R	1991-93	YA 304	S46HR1C1	16	261	53	01093-34			
V-Max	1985-92	YA 137*	S36PR1C1LB	30	324 +10/-0	87	00380-05			
V-Max	1985-92	YA 427*	S36PR1C1L	30	324 +10/-0	87	00360-05 (B)			
V-Max	1985-92	YA 426*	S36PR1C1L	30	324 +10/-0	87	00380-05 (Y)			
V-Max	1993-05	YA 137*	S36PR1C1LB	30	324 +10/-0	87	00380-05	08676-70		300
V-Max	1993-05	YA 427*	S36PR1C1L	30	324 +10/-0	87	00360-05 (B)	08676-70		300
V-Max	1993-05	YA 426*	S36PR1C1L	30	324 +10/-0	87	00380-05 (Y)	08676-70		300
XJR 400	1991-	YA 145*	S36P	13	320,5	83	00480-02			
XJR 400	1991-	YA 138*	S36PR1C1LB	30	321 +10/-0	84	00380-04			
XJR 1200	1995-98	YA 139*	S36PR1C1LB	30	325 +10/-0	92	00380-06	08834-01		300
XJR 1200	1995-98	YA 156*	S36P	13	326	94	00480-23	08834-01		300
XJR 1200	1995-98	YA 413*	S36PR1C1L	30	325 +10/-0	92	00360-06 (B)	08834-01		300
XJR 1200	1995-98	YA 417*	S36PR1C1L	30	325 +10/-0	92	00380-06 (Y)	08834-01		300
XJR 1300	1999-01	YA 139*	S36PR1C1LB	30	325 +10/-0	92	00380-06	08660-80		300
XJR 1300	1999-01	YA 156*	S36P	13	326	94	00480-23	08660-80		300
XJR 1300	1999-01	YA 413*	S36PR1C1L	30	325 +10/-0	92	00360-06 (B)	08660-80		300
XJR 1300	1999-01	YA 417*	S36PR1C1L	30	325 +10/-0	92	00380-06 (Y)	08660-80		300
XJR 1300	2002-05	YA 139*	S36PR1C1LB	30	325 +10/-0	92	00380-06			
XJR 1300	2002-05	YA 156*	S36P	13	326	94	00480-23			
XJR 1300	2002-05	YA 413*	S36PR1C1L	30	325 +10/-0	92	00360-06 (B)			
XJR 1300	2002-05	YA 417*	S36PR1C1L	30	325 +10/-0	92	00380-06 (Y)			
XT 660 R	2004-05	YA 418	S46DR1	12	341	68,5	01096-54	08709-50		300
XT 660 X	2004-05	YA 418	S46DR1	12	341	68,5	01096-54	08716-50/ -60		300

\* These shocks are delivered as pairs.



# R&T Shock Absorbers, Fork Spring Kits

Brand Mode, type	Year	Shock Absorber		P/C	Length	Stroke	Spring	Fork Spring	
		Part No.	Type					Part No.	P/C
<b>Yamaha</b>									
XV1600 Wild Star/Road Star	1999-04	YA 548	S46DR1LS	20	311 0/-12	41,5	21118-49	08849-01	300
XV1600 Wild Star/Road Star	1999-04	YA 549	S46DR1L	13	311 0/-12	41,5	21118-49	08849-01	300
XV 1700 Wild Star/Road Star	2004-05	YA 548	S46DR1LS	20	311 0/-12	41,5	21118-49	08849-01	300
XV 1700 Wild Star/Road Star	2004-05	YA 549	S46DR1L	13	311 0/-12	41,5	21118-49	08849-01	300
XV1700 Road Warrior	2003-05	YA 714	S46DR1LS	20	311 0/-12	41,5	21118-49		
XV1700 Road Warrior	2003-05	YA 715	S46DR1L	13	311 0/-12	41,5	21118-49		
XV1900 Midnight Star	2006-07	YA 716	S46DR1LS	20	311,5 0/-12	42,5	21118-69	08851-01	300
XV1900 Midnight Star	2006-07	YA 717	S46DR1L	13	311,5 0/-12	42,5	21118-69	08851-01	300
XVS650 Drag Star	1997-04	YA 735	S46DR1LS	20	272,5 0/-12	30,5	21116-54	08844-01	300
XVS650 Drag Star	1997-04	YA 736	S46DR1L	13	272,5 0/-12	30,5	21116-54	08844-01	300
XVS650A Drag Star Classic	1997-07	YA 709	S46DR1LS	20	278,5 0/-12	32,5	21116-54	08845-01	300
XVS650A Drag Star Classic	1997-07	YA 710	S46DR1L	13	278,5 0/-12	32,5	21116-54	08845-01	300
XVS1100 Drag Star	1999-04	YA 745	S46DR1LS	20	299,5 0/-12	42,5	21117-49	08846-01	300
XVS1100 Drag Star	1999-04	YA 746	S46DR1L	13	299,5 0/-12	42,5	21117-49	08846-01	300
XVS1100A Drag Star Classic	2000-07	YA 705	S46DR1LS	20	304,5 0/-12	47,5	21118-59	08847-01	300
XVS1100A Drag Star Classic	2000-07	YA 706	S46DR1L	13	304,5 0/-12	47,5	21118-59	08847-01	300
XVS1300A Midnight Star	2007	YA 753	S46DR1LS	20	305 0/-12	39,5	21117-64	08848-01	300
XVS1300A Midnight Star	2007	YA 754	S46DR1L	13	305 0/-12	39,5	21117-64	08848-01	300
YZF 1000	1996-99	YA 601	S46HR1C1L	17	340 +12/-0	69	01091-29	08632-90	300
YZF 1000	1996-99	YA 637	S46HR1C1LS	24	340 +12/-0	69	01091-29	08632-90	300
YZF 1000	2000	YA 637	S46HR1C1LS	24	340 +12/-0	69	01091-29		
YZF R6	1999-02	YA 154	S46PR1C2LS	30	305 +4/-2	62	01093-29	08652-85/ -90/ -95/ -10	300
YZF R6	2003-04	YA 305	S46PR1C2LS	28	295 +5,5/-0,5	62,5	01093-36	08692-90/ -95/ -10	300
YZF R6	2005	YA 505	S46PR1C2LB	30	300,5 +0/-6	62,5	01093-36	08714-95/ -10	300
YZF R6	2006-07	YA 606	S46PR1C2B	29	292	59	01093-31	08722-85/ -90/ -95/ -10	300
YZF R6	2008-09	YA 789	T36PR1C1LB	30	293 +5/-1	60	21041-34	08760-85/ -90/ -95/ 10	300
YZF R1	1998-01	YA 155	S46PR1C2LS	28	300 +11/-1	65	01093-26	08649-80	300
YZF R1	2002-03	YA 204	S46PR1C2LS	28	300 +5,5/-0,5	64,5	01093-26	08681-90/ -95	300
YZF R1	2004-06	YA 343	S46PR1C2LS	28	300 +6/-0	64,5	01093-31	08672-95/ -10	300
YZF R1	2004-06	YA 348	S46PR1C1	16	300	65,5	01093-31	08672-95/ -10	300
YZF R1	2007	YA 743	S46PR1C2LB	28	302 +4/-2	64,5	01093-31	08672-95/ -10	300
YZF R1	2008	YA 788	T36PR1C1LB	30	302 +4/-2	65	21040-31	08672-95/ -10	300
YZF R1	2009	YA 888	T36PR1C1LS	30	297 +4/-2	60	21010-34		

\* These shocks are delivered as pairs.

# R&T Front Forks

Brand Brand/Model	Year	Part No	Type	P/C	Length	Stroke	Spring	Note
<b>Buell</b>								
XB9R Firebolt	2005	FG 334	43mm R&T	115	708	120	04744-95	
XB9S Lightning	2005	FG 334	43mm R&T	115	708	120	04744-95	
XB12R Firebolt	2005	FG 334	43mm R&T	115	708	120	04744-95	
XB12S Lightning	2005	FG 334	43mm R&T	115	708	120	04744-95	
<b>Ducati</b>								
748, cc 40mm brakes	1994-98	FG 318	43mm R&T	115	717	120	04744-95	
748, cc 65mm brakes	1998-01	FG 320	43mm R&T	115	717	120	04744-95	Does not fit 748R
749	2003-05	FG 314	43mm R&T	115	717	120	04744-95	
749/999, cc 100mm radial		FG 331	43mm R&T	115	717	120	04744-95	Universal
848	2007-08	FPK 103	Fork piston kit					20mm kit
848	2008	FGK 138	Cartridge kit	111			04744-95	Öhlins Top-cap
848	2008	FGRT 803	43mm R&T	115	715	120	04744-95	
916, cc 40mm brakes	1994-98	FG 318	43mm R&T	115	717	120	04744-95	
916, cc 65mm brakes	1998	FG 320	43mm R&T	115	717	120	04744-95	
996	1999-01	FG 320	43mm R&T	115	717	120	04744-95	
998	2002-03	FG 320	43mm R&T	115	717	120	04744-95	
999	2003-05	FG 314	43mm R&T	115	717	120	04744-95	
1098	2007-08	FGRT 803	43mm R&T	115	715	120	04744-95	
1098	2008	FGK 138	Cartridge kit	111			04744-95	Öhlins Top-cap
1098	2007-08	FPK 103	Fork piston kit					20mm kit
Monster 620/ 750/ 900	2002	FG 845	43mm R&T	115	700	120	04745-90	
Monster 620/ 800/ 1000	2003-05	FG 845	43mm R&T	115	700	120	04745-90	
Monster S2R	2005	FG 845	43mm R&T	115	700	120	04745-90	
Monster S4	2001-05	FG 845	43mm R&T	115	700	120	04745-90	
Monster S4R	2003-05	FG 845	43mm R&T	115	700	120	04745-90	
<b>Honda</b>								
CBR 600RR	2007-08	FPK 106	Fork piston kit					20mm kit
CBR 600RR	2007-08	FGK 135	Cartridge kit	111			04744-90	Öhlins Top-cap
CBR 1000RR	2004-07	FGK 126	Cartridge kit	111			04744-90	Öhlins Top-cap
CBR 1000RR	2004-06	FG 329	43mm R&T	115	717	120	04744-95	
CBR 1000RR	2008	FPK 101	Fork piston kit					20mm kit
CBR 1000RR	2008	FGK 140	Cartridge kit	111			04744-95	Öhlins Top-cap
CBR 1000RR	2008	FGRT 806	43mm R&T	115	715	120	04744-95	
<b>Kawasaki</b>								
ZX 6R	2007-08	FGK 133	Cartridge kit	111			04744-90	Öhlins Top-cap
ZX 10R	2004-05	FGK 117	Cartridge kit	111			04744-90	Öhlins Top-cap
ZX 10R	2004-05	FG 330	43mm R&T	115	730	120	04744-95	
ZX 10R	2006-07	FGK 129	Cartridge kit	111			04744-90	Standard Top-cap
ZX 10R	2006-07	FG 352	43mm R&T	115	743	120	04744-95	
ZX 10R	2008	FPK 105	Fork piston kit					20mm kit
ZX 10R	2008-09	FGK 142	Cartridge kit	111			04744-95	Öhlins Top-cap
ZX 10R	2008-09	FGRT 804	43mm R&T	115	765	120	04744-95	
ZX 12R	2000-03	FG 842	43mm R&T	115	730	120	04745-10	
ZZ-R 1400	2006-08	FGRT 807	43mm R&T	115	755	120	04744-95	
<b>Suzuki</b>								
GSX-R 600	2004-05	FG 311	43mm R&T	115	730	120	04744-95	
GSX-R 600	2008	FPK 102	Fork piston kit					20mm kit
GSX-R 600	2006-08	FGK 132	Cartridge kit	111			04744-90	Öhlins Top-cap
GSX-R 750	2004-05	FG 311	43mm R&T	115	730	120	04744-95	
GSX-R 750	2008	FPK 102	Fork piston kit					20mm kit
GSX-R 750	2006-08	FGK 132	Cartridge kit	111			04744-90	Öhlins Top-cap
GSX-R 1000	2003-04	FG 311	43mm R&T	115	730	120	04744-95	
GSX-R 1000	2004-06	FGK 119	Cartridge kit	111			04744-90	Öhlins Top-cap
GSX-R 1000	2005-06	FG 339	43mm R&T	115	730	120	04744-95	
GSX-R 1000	2007-08	FPK 104	Fork piston kit					20mm kit
GSX-R 1000	2007-08	FGK 136	Cartridge kit	111			04744-95	Öhlins Top-cap
GSX-R 1000	2007-08	FGRT 802	43mm R&T	115	735	120	04744-10	
GSX 1300 R Hayabusa	1999-07	FG 838	43mm R&T	115	723	120	04745-90	
GSX 1300 R Hayabusa	2008	FGRT 805	43mm R&T	115	730	120	04744-10	
<b>Yamaha</b>								
MT 01	2005-08	FG 337	43mm R&T	115	764	120	04744-95	
YZF R6	2003-04	FGK 114	Cartridge kit	111			04744-90	Öhlins Top-cap
YZF R6	2005	FGK 118	Cartridge kit	111			04744-90	Öhlins Top-cap
YZF R6	2006-08	FPK 107	Fork piston kit					20mm kit
YZF R6	2006-07	FGK 127	Cartridge kit	111			04744-90	Öhlins Top-cap
YZF R6	2008-09	FGK 137	Cartridge kit	111			04744-90	Öhlins Top-cap

# R&T Front Forks

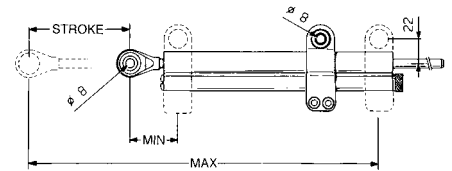
Brand Brand/Model	Year	Part No	Type	P/C	Length	Stroke	Spring	Note
<b>Yamaha</b>								
YZF R1	2004-06	FG 327	43mm R&T	115	730	120	04744-95	
YZF R1	2004-06	FGK 120	Cartridge kit	111			04744-90	Öhlins Top-cap
YZF R1 SP/LE	2006	FGK 128	Cartridge kit	111			04744-90	Öhlins Top-cap
YZF R1	2007-08	FGK 134	Cartridge kit	111			04744-95	Öhlins Top-cap
YZF R1	2007-08	FGRT 801	43mm R&T	115	730	120	04744-95	
<b>Universal</b>								
Road & Track		FG 324	43mm R&T	113	800	120	04744-85	
Superbike		FGR 900	43mm SBK	125	740	130	04744-95	
RR 125		FGR 710	38mm RR	118	615	100	21610-55	
Front fork piston kit Ø20mm		03200-01	Fork piston kit					
Front fork piston kit Ø25mm		03200-25	Fork piston kit					

## FPK Kit



# R&T Steering Dampers

Universal Brand/Model	Part No.	P/C	Stroke	Min/Max
Steering damper stroke 63	SD 115	40	63	34.5/221.5
Steering damper stroke 68	SD 121	40	68	39.5/236.5
Steering damper stroke 90	SD 110	40	90	34.5/275.5
Steering damper stroke 120	SD 100	40	120	34.5/335.5
Steering damper stroke 140	SD 140	42	140	34.5/375.5
Steering damper stroke 150	SD 200	42	150	34.5/395.5
Rotary Type R&T	SD 431	44		
Rotary Type R&T Inverted logo	SD 432	44		



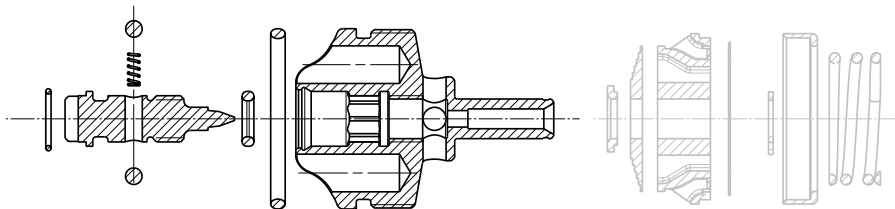
# R&T Steering Damper Kits

Complete kits with special brackets included						
Brand/Model	Year	Part No.	P/C	Stroke	Mounting position	Note
<b>Aprilia</b>						
RSV 1000 Mille	1999-03	SD 133	40	63	OR	
RSV 1000 R	2004-06	SD 175	40	65	OR	
RSV 1000 Tuono	2003-04	SD 133	40	63	OR	
<b>Ducati</b>						
748	1994-02	SD 120	44	68	OR	
749	2003-06	SD 168	44	68	AC	
848	2008	SD 197	46	63	OR	
916	1994-98	SD 120	44	68	OR	
996	1999-01	SD 120	44	68	OR	
998	2002-03	SD 120	44	68	OR	
999	2003-06	SD 168	44	68	OR	
1098	2007-08	SD 120	44	68	OR	
MH 900e	2001-02	SD 156	42	63	AC	
Monster 620/ 750/ 900	2002	SD 154	44	140	SI	
Monster 620/ 800/ 1000	2003-07	SD 154	44	140	SI	
Monster S2R	2005-07	SD 154	44	140	SI	
Monster S4	2001-07	SD 154	44	140	SI	
Monster S4R	2003-07	SD 154	44	140	SI	
Monster S4Rs	2006-07	SD 154	44	140	SI	
<b>Honda</b>						
CBR 600 F/F-Sport	1999-02	SD 148	44	68	AC	
CBR 600RR	2003-04	SD 170	46	63	AC	
CBR 600RR	2005-06	SD 180	46	63	AC	
CBR 900RR / 929	2000-01	SD 144	46	63	AC	
CBR 900RR / 954	2002-03	SD 159	46	63	AC	
<b>Kawasaki</b>						
ZX 6 R	2000-02	SD 149	46	63	AC	
ZX 6 R	2003-04	SD 169	46	63	AC	
ZX 6 RR	2003-04	SD 169	46	63	AC	
ZX 6 R	2005-06	SD 186	46	63	AC	
ZX 6 R	2007-08	SD 189	46	63	AC	
ZX 10 R	2004-05	SD 177	46	63	AC	
<b>Suzuki</b>						
GSX-R 600	2004-05	SD 176	46	63	AC	
GSX-R 600	2001-07	SD 187	44	68	OR	
GSX-R 600	2008	SD 187	44	68	OR	For race-use only
GSX-R 750	2004-05	SD 176	46	63	AC	
GSX-R 750	2000-07	SD 187	44	68	OR	
GSX-R 750	2008	SD 187	44	68	OR	For race-use only
GSX-R 1000	2001-06	SD 187	44	68	OR	
GSX-R 1000	2003-04	SD 167	46	63	AC	
GSX-R 1000	2005-06	SD 181	46	63	AC	
GSX-R 1000	2007-08	SD 187	44	68	OR	For race-use only
GSX 1300 R Hayabusa	1999-02	SD 143	46	63	AC	
GSX 1300 R Hayabusa	2003-08	SD 182	46	63	AC	
GSX 1300 R Hayabusa	2008	SD 187	44	68	OR	
TL 1000 R	1998-01	SD 137	40	68	AC	
<b>Yamaha</b>						
FZ1	2006					
FZ6	2004-05	SD 178	46	63	AC	
YZF R6	1999-02	SD 150	45	63	AC	
YZF R6	2003-05	SD 163	45	63	AC	
YZF R6	2006-07	SD 183	46	63	AC	
YZF R6	2008-09	SD 195	46	63	AC	
YZF R1	1998-01	SD 124	46	68	AC	
YZF R1	2002-03	SD 157	46	63	AC	
YZF R1	2004-08	SD 173	40	68	OR	
YZF R1 SP/LE	2006	SD 173	40	68	OR	

# Machined MotoGP-style adjusters for TTX36



Part No	Description
24501-15	1,5mm needle. One kit contains one black adjuster assy for rebound side, and one gold adjuster assy for comp. side.
24501-25	2,5mm needle. One kit contains one black adjuster assy for rebound side, and one gold adjuster assy for comp. side.



## Machined Comp. Adj. Knobs



Part No	Description
03253-01	Anodized Clear
03253-02	Anodized Gold
03253-03	Anodized Blue

For the new generation of twin shocks and replacement for 820-02 and 820-03.

## Machined Preload Adjuster Knobs

Fig. 4



Part No.	Description
<b>For Hose type (fig. 4)</b>	
03617-01	Anodized Clear
03617-02	Anodized Gold
03617-03	Anodized Blue

Part No.	Description
<b>For Integrated type (fig. 5)</b>	
03616-01	Anodized Clear
03616-02	Anodized Gold
03616-03	Anodized Blue

Fig. 5



## Forkleg Clamps for Steering Dampers

Part No	Forkleg dim	Clamp dim (mm)
02235-01	Ø 38mm	38x44x16,5
02235-02	Ø 39mm	39x45x16,5
02235-03	Ø 40mm	40x46x16,5
02235-04	Ø 41mm	41x47x16,5
02235-05	Ø 42mm	42x48x16,5
02235-06	Ø 43mm	43x49x16,5
02235-07	Ø 44mm	44x50x16,5
02235-08	Ø 45mm	45x51x16,5
02235-09	Ø 46mm	46x52x16,5
02235-11	Ø 50mm	50x56x16,5
02235-13	Ø 52mm	52x58x16,5
02235-14	Ø 53mm	53x59x16,5
02235-15	Ø 53,5mm	53,5x59,5x16,5
02235-16	Ø 54mm	54x60x16,5
02235-17	Ø 55mm	55x61x16,5



## R&T Steering Damper Reservoir Kit

Part No	Description
02280-01	This kit is being used by racing teams in MotoGP, WSB and AMA. The kit is a big improvement when the steering damper is used in extreme racing conditions.



## Radial Caliper Mount Kit for R&T Forks

Part No	Description
04791-01	Fork bottom kit, Brembo radial brakes c-c 100mm
04791-02	Fork bottom kit, Brembo radial brakes c-c 108mm



## C-Spanners

Part No	Description
00710-51	For 36mm shock absorbers
00710-52	For 46mm shock absorbers
00710-55	For TTX36 shock absorbers



## Front Fork Fluid

Part No	Description	Viscosity, cSt at 40° C	Contains	Application
01312-01	Front fork fluid # 2,5	15,0	1 litre	For Öhlins RR/MX forks.
01312-02	Front fork fluid # 2,5	15,0	1,4 litre	For Öhlins RR/MX forks.
01312-10	Front fork fluid # 2,5	15,0	10 litre	For Öhlins RR/MX forks.
01310-01	Front fork fluid # 5	22,0	1 litre	For cartridge forks.
01310-02	Front fork fluid # 5	22,0	1,4 litre	For cartridge forks.
01310-10	Front fork fluid # 5	22,0	10 litre	For cartridge forks.
01315-01	Front fork fluid # 10	35,0	1 litre	For cartridge forks.
01320-01	Front fork fluid # 15	50,0	1 litre	For cartridge forks.
01325-01	Front fork fluid # 20	99,0	1 litre	For non cartridge forks.
01309-01	Suspension fluid	19,0	1 litre	For various applications.
01309-10	Suspension fluid	19,0	10 litre	For various applications.

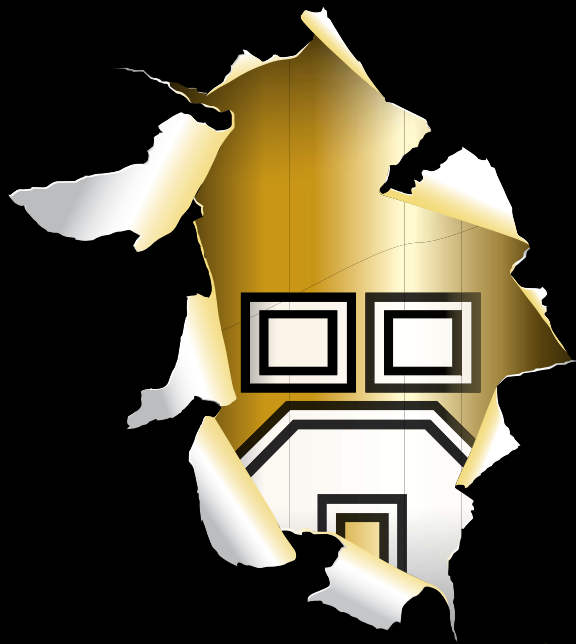
## Shock Absorber Fluid

Part No	Description	Viscosity, cSt at 40° C	Contains	Application
00105-01	Shock absorber fluid	28,0	1 litre	For R&T shocks.
00105-10	Shock absorber fluid	28,0	10 litre	For R&T shocks.
01304-01	Offroad racing shock fluid	16,0	1 litre	For Car&Motorcycle offroad.
01304-10	Offroad racing shock fluid	16,0	10 litre	For Car&Motorcycle offroad.
01309-01	Suspension fluid	19,0	1 litre	For R&T shocks and steering dampers.
01309-10	Suspension fluid	19,0	10 litre	For R&T shocks and steering dampers.

## Grease

Part No	Description	Contains	Application
00146-01	Öhlins red grease	100 gram	Multi purpose grease.
00146-02	Öhlins red grease	400 gram	Multi purpose grease.
00147-01	Öhlins white grease	100 gram	When overhauling shock absorbers.
00147-02	Öhlins white grease	500 gram	When overhauling shock absorbers.





*The Original Gold*

Your Öhlins retailer:



Öhlins Racing AB  
Box 722  
SE-194 27, Upplands Väsby  
Sweden

Phone: +46 (0)8 590 025 00  
Fax: +46 (0)8 590 025 80  
[www.ohlins.com](http://www.ohlins.com)

